

**VSS-I Series Expansion Joint**  
**Sizes 800 through 3665**  
**(Wall-to-Wall)**



50 MM WAY  
 PENDERGRASS, GA. 30567  
 706-824-7500 PHONE

[www.mm.systems](http://www.mm.systems)

For Spec-Data, Install Guides, and other data visit [www.mm.systems](http://www.mm.systems)

**RIGHTS OF DESIGN**

All rights of design, detail, engineering and/or invention contained herein are the property of MM Systems and hereby reserved and are not to be reproduced or provided to any other party. MM Systems reserves the right to amend or withdraw any information contained herein without notice and will not be liable for any inaccuracy or ambiguity of said information.

**Vertical Sealing System**





**VSS-I Series (800-3665)**

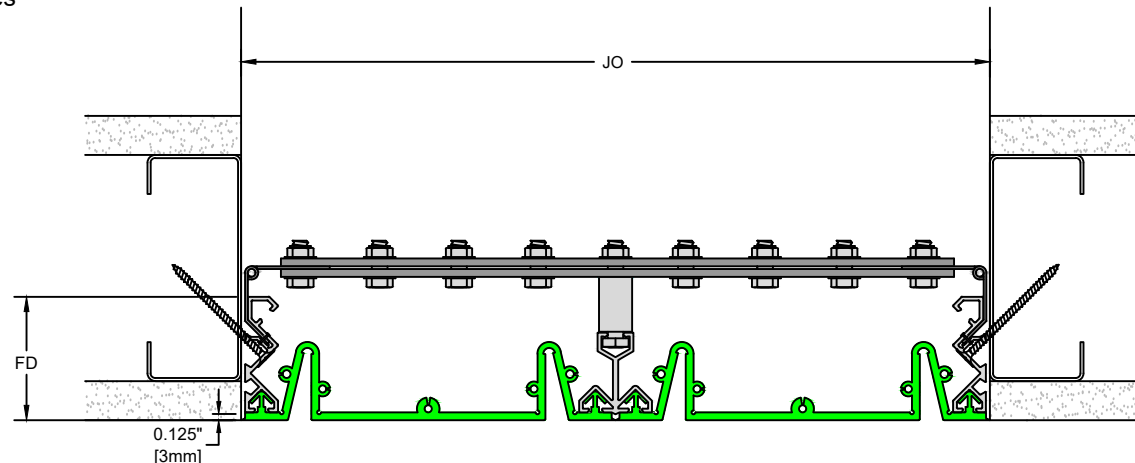
Drawn by: LRM	Scale: NTS	Drawing Number:  <b>31500-021</b>
SHT. 1 OF 3	Issue Date: 01/31/2025	

## VSS-I SERIES EXPANSION JOINT MOVEMENT CHART (800-3665) / 50% MOVEMENT

Model Number	Joint Opening (JO <sup>N</sup> )		Thermal Movement (JO <sup>T</sup> )				Seismic Movement (JO <sup>S</sup> )				Total (JO <sup>A</sup> ) Movement	
			Minimum		Maximum		Minimum		Maximum			
	Nominal											
VSS-700	<b>7.00</b>	178	<b>6.50</b>	165	7.50	191	<b>3.50</b>	95	<b>10.50</b>	267	<b>7.00</b>	178
VSS-800	<b>8.00</b>	203	<b>7.50</b>	191	<b>8.50</b>	216	<b>4.00</b>	102	<b>12.00</b>	305	<b>8.00</b>	203
VSS-900	<b>9.00</b>	229	<b>8.50</b>	216	<b>9.50</b>	241	<b>4.50</b>	115	<b>13.50</b>	343	<b>9.00</b>	229
VSS-1000	<b>10.00</b>	254	<b>9.50</b>	241	<b>10.50</b>	267	<b>5.00</b>	127	<b>15.00</b>	381	<b>10.00</b>	254
VSS-1021	<b>10.00</b>	254	<b>9.50</b>	241	<b>10.50</b>	267	<b>5.00</b>	127	<b>15.00</b>	381	<b>10.00</b>	254
VSS-1121	<b>11.00</b>	279	<b>10.50</b>	267	<b>11.50</b>	292	<b>5.50</b>	140	<b>16.50</b>	419	<b>11.00</b>	279
VSS-1221	<b>12.00</b>	305	<b>11.50</b>	292	<b>12.50</b>	318	<b>6.00</b>	152	<b>18.00</b>	457	<b>12.00</b>	305
VSS-1321	<b>13.00</b>	330	<b>12.50</b>	318	<b>13.50</b>	343	<b>6.50</b>	165	<b>19.50</b>	495	<b>13.00</b>	330
VSS-1423	<b>14.00</b>	356	<b>13.50</b>	343	<b>14.50</b>	368	<b>7.00</b>	178	<b>21.00</b>	533	<b>14.00</b>	356
VSS-1532	<b>15.00</b>	381	<b>14.50</b>	368	<b>15.50</b>	394	<b>7.50</b>	191	<b>22.50</b>	572	<b>15.00</b>	381
VSS-1623	<b>16.00</b>	406	<b>15.50</b>	394	<b>16.50</b>	419	<b>8.00</b>	203	<b>24.00</b>	610	<b>16.00</b>	406
VSS-1643	<b>16.00</b>	406	<b>15.50</b>	394	<b>16.50</b>	419	<b>8.00</b>	203	<b>24.00</b>	610	<b>16.00</b>	406
VSS-1832	<b>18.00</b>	457	<b>17.50</b>	445	<b>18.50</b>	470	<b>9.00</b>	229	<b>27.00</b>	686	<b>18.00</b>	457
VSS-2023	<b>20.00</b>	508	<b>19.50</b>	493	<b>20.50</b>	527	<b>10.00</b>	254	<b>30.00</b>	762	<b>20.00</b>	508
VSS-2243	<b>22.00</b>	559	<b>21.50</b>	546	<b>22.50</b>	572	<b>11.00</b>	279	<b>33.00</b>	838	<b>22.00</b>	559
VSS-2443	<b>24.00</b>	610	<b>23.50</b>	597	<b>24.50</b>	622	<b>12.00</b>	305	<b>36.00</b>	914	<b>24.00</b>	610
VSS-3054	<b>30.00</b>	762	<b>29.50</b>	749	<b>30.50</b>	775	<b>15.00</b>	381	<b>45.00</b>	1143	<b>30.00</b>	762
VSS-3665	<b>36.00</b>	914	<b>35.50</b>	902	<b>36.50</b>	927	<b>18.00</b>	457	<b>54.00</b>	1372	<b>36.00</b>	914

Dimension shown in **inches** (bold) and millimeters. Refer to the VSS AutoCAD file for individual system drawings.  
Can be anchored into multiple substrates

CONSIDERATIONS	
	Color Options
	Thermal
	Seismic
	UV Stable



50 MM WAY  
PENDERGRASS, GA. 30567  
706-824-7500 PHONE

[www.mm.systems](http://www.mm.systems)

For Spec-Data, Install Guides, and other data visit [www.mm.systems](http://www.mm.systems)

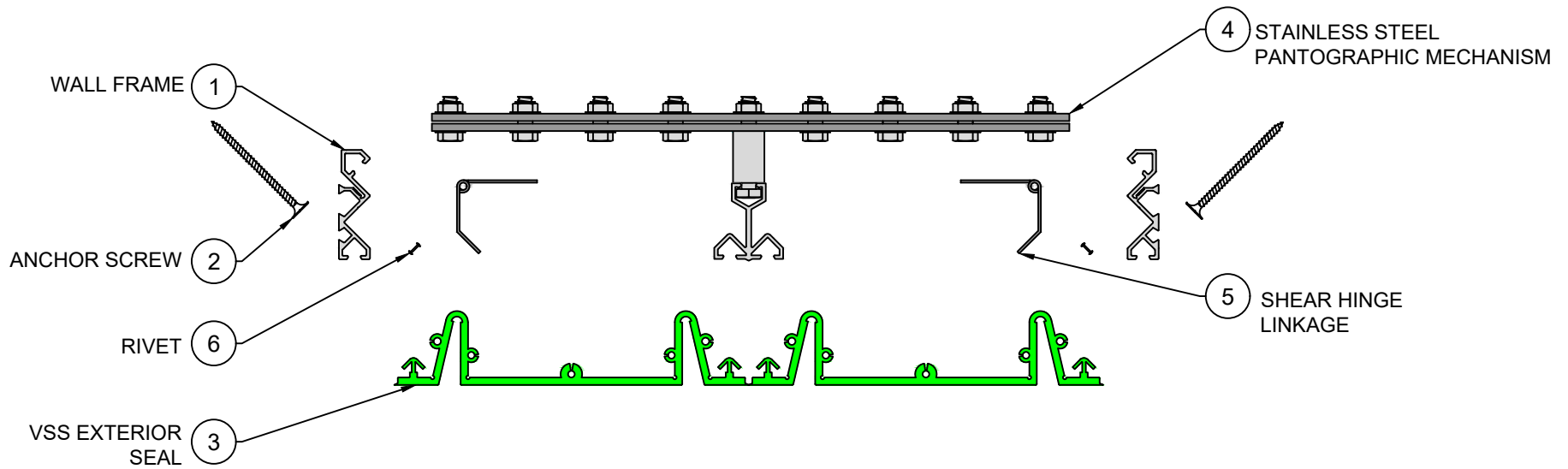
### RIGHTS OF DESIGN

All rights of design, detail, engineering and/or invention contained herein are the property of MM Systems and hereby reserved and are not to be reproduced or provided to any other party. MM Systems reserves the right to amend or withdraw any information contained herein without notice and will not be liable for any inaccuracy or ambiguity of said information.

### Vertical Sealing System

## VSS-I Series (800-3665)

Drawn by: <b>LRM</b>	Scale: <b>NTS</b>	Drawing Number:
SHT. 2 OF 3	Issue Date: 01/31/2025	<b>31500-021</b>



EXPLODED VIEW ▲  
PART NUMBERS ▼

Locator	Part Component	VSS-700	VSS-800	VSS-900	VSS-1000	VSS-1021	VSS-1121	VSS-1221	VSS-1321	VSS-1423	VSS-1532	VSS-1623	VSS-1643	VSS-1832	VSS-2023	VSS-2243	VSS-2443	VSS-3054	VSS-3665
1	Wall Frame	8154	8154	8154	8154	8154	8154	8154	8154	8154	8154	8154	8154	8154	8154	8154	8154	8154	8154
2	Anchor Screw	9397	9397	9397	9397	9397	9397	9397	9397	9397	9397	9397	9397	9397	9397	9397	9397	9397	9397
3	VSS Exterior Seal	9418	9827	9828	9828	(2)9825	(2)9826	(2)9826	(2)9826	(2)9418	(3)9825	(3)9827	(4)9824	(3)9826	(2)9828	(4)9826	(4)9826	(5)9826	(6)9826
4	S.S. Pantograph	ASSY-MP-001-D	ASSY-MP-001-D	ASSY-MP-001-D	ASSY-MP-001-D	ASSY-MP-001-D	ASSY-MP-002-D	ASSY-MP-002-D	ASSY-MP-002-D	ASSY-MP-003-D	ASSY-MP-003-D	ASSY-MP-003-D	ASSY-MP-004-D	ASSY-MP-003-D	ASSY-MP-004-D	ASSY-MP-004-D	ASSY-MP-004-D	ASSY-MP-005-D	ASSY-MP-006-D
5	Shear Hinge Linkage	8835	8835	8835	8835	8835	8835	8835	8835	8835	8835	8835	8835	8835	8835	8835	8835	8835	8835
6	Rivet	9536	9536	9536	9536	9536	9536	9536	9536	9536	9536	9536	9536	9536	9536	9536	9536	9536	9536



50 MM WAY  
PENDERGRASS, GA. 30567  
706-824-7500 PHONE

[www.mm.systems](http://www.mm.systems)

For Spec-Data, Install Guides, and other data visit [www.mm.systems](http://www.mm.systems)

**RIGHTS OF DESIGN**

All rights of design, detail, engineering and/or invention contained herein are the property of MM Systems and hereby reserved and are not to be reproduced or provided to any other party. MM Systems reserves the right to amend or withdraw any information contained herein without notice and will not be liable for any inaccuracy or ambiguity of said information.

**Vertical Sealing System**

**VSS-I Series (800-3665)**

Drawn by:

LRM

Scale:

NTS

Drawing Number:

SHT. 3 OF 3

Issue Date:

01/31/2025

**31500-021**