

SNF Series Expansion Joint
Sizes 1000 through 1800
(Floor-to-Floor)



50 MM WAY
 PENDERGRASS, GA. 30567
 706-824-7500 PHONE

www.mm.systems

For Spec-Data, Install Guides, and other data visit www.mm.systems

RIGHTS OF DESIGN

All rights of design, detail, engineering and/or invention contained herein are the property of MM Systems and hereby reserved and are not to be reproduced or provided to any other party. MM Systems reserves the right to amend or withdraw any information contained herein without notice and will not be liable for any inaccuracy or ambiguity of said information.

Seismic No-Bump Flush Metal Cover Expansion Joint






SNF Series (1000-1800)

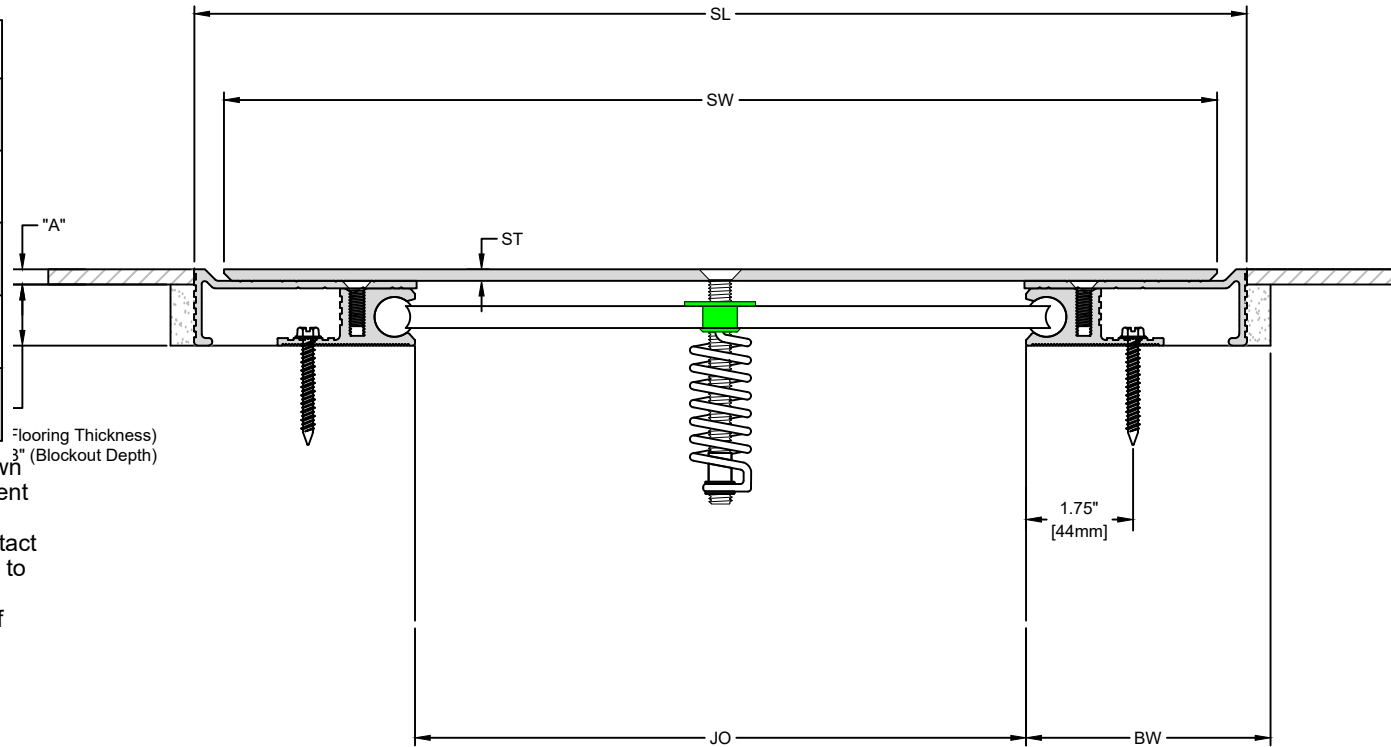
Drawn by: LRM	Scale: NTS	Drawing Number: 16000-01
SHT. 1 OF 3	Issue Date: 01/03/2023	

SNF SERIES EXPANSION JOINT MOVEMENT CHART / 50% MOVEMENT

Model Number	Joint Opening (JO ^N)		Sight Line (SL ^N)		Thermal Movement (JO ^T)				Seismic Movement (JO ^S)				Total (JO ^A)		Slide Plate Thickness (ST)		Slide Plate Width (SW)		Blockout Width (BW)		Blockout Depth (BD)	
	Nominal		Nominal		Minimum		Maximum		Minimum		Maximum		Movement									
SNF-1000	10.00	254	17.22	437	9.50	241	10.50	267	5.00	127	15.00	381	10.00	254	0.1875	5	16.250	413	4.00	102	1.25	32
SNF-1200	12.00	305	20.22	514	11.50	292	12.50	318	6.00	152	18.00	457	12.00	305	0.1875	5	19.250	489	4.50	114	1.25	32
SNF-1400	14.00	356	23.35	593	13.50	343	14.50	368	7.00	178	21.00	533	14.00	356	0.25	6	22.25	565	5.00	127	1.3125	33
SNF-1600	16.00	406	26.35	669	15.50	394	16.50	419	8.00	203	24.00	610	16.00	406	0.25	6	25.25	641	5.50	140	1.3125	33
SNF-1800	18.00	457	29.35	745	17.50	445	18.50	470	9.00	229	27.00	656	18.00	457	0.25	6	28.25	718	6.00	152	1.3125	33

Dimension shown in **inches** (bold) and millimeters. Refer to the SNF AutoCAD file for individual system drawings.

LOAD TABLE	
	Safe Walking Surface
	Hand Truck
	Shopping Cart
	Floor Polisher
	Maintenance Cart



Note: The SNF loading capabilities shown above are based upon average equipment weights, wheel types and sizes. For project-specific loading capabilities, contact MM Systems with technical data related to wheel type, contact area (footprint), distributed load per wheel, and speed of traffic.



50 MM WAY
PENDERGRASS, GA. 30567
706-824-7500 PHONE

www.mm.systems

For Spec-Data, Install Guides, and other data visit www.mm.systems

RIGHTS OF DESIGN

All rights of design, detail, engineering and/or invention contained herein are the property of MM Systems and hereby reserved and are not to be reproduced or provided to any other party. MM Systems reserves the right to amend or withdraw any information contained herein without notice and will not be liable for any inaccuracy or ambiguity of said information.

Seismic No-Bump Flush Metal Cover Expansion Joint

SNF Series (1000-1800)

Drawn by:

LRM

Scale:

NTS

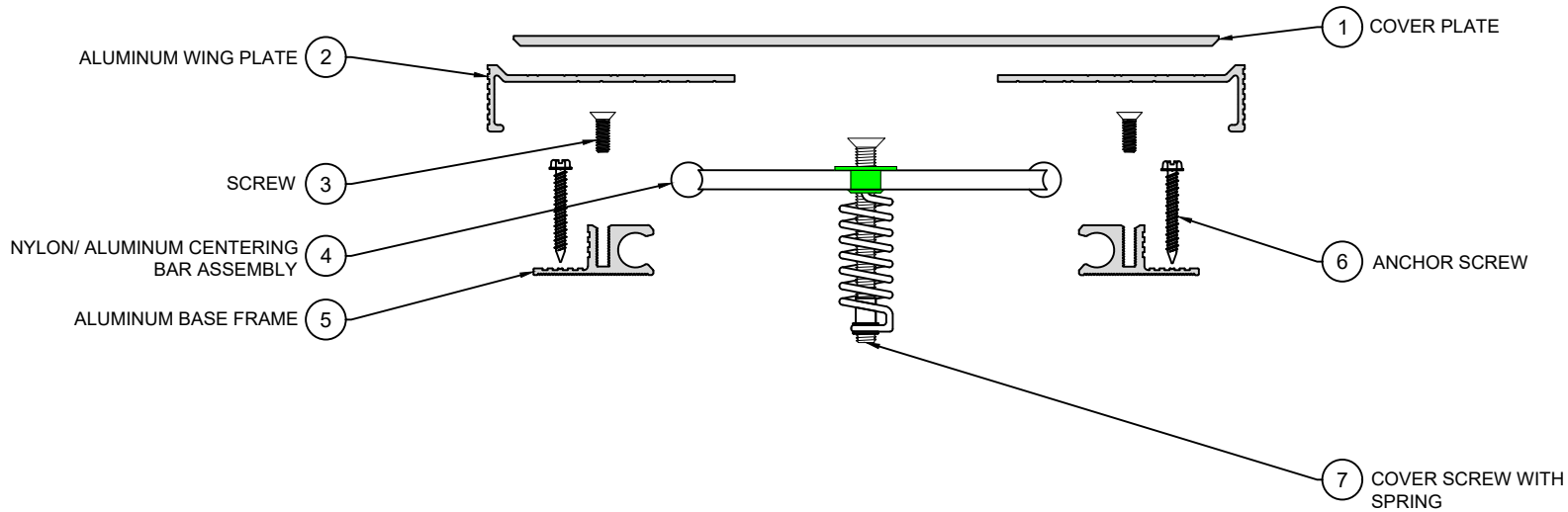
Drawing Number:

SHT. 2 OF 3

Issue Date:

01/03/2023

16000-01



NOTE: LOKCRETE® BEDDING COMPOUND
(8333) Not shown.

EXPLODED VIEW ▲

PART NUMBERS ▼

Locator	Part Component	SNF-1000	SNF-1200	SNF-1400	SNF-1600	SNF-1800
1	Cover Plate	NBAB-AM-10-1604-02-24	NBAB-AM-10-1904-02-24	NBAB-AM-10-2304-02-24	NBAB-AM-10-2704-02-24	NBAB-AM-10-2904-02-24
2	Aluminum Wing Plate	7127#0310-M-10-00-18	7127#0410-M-10-00-18	7129#0502-M-10-00-18	7129#0602-M-10-00-18	7129#0602-M-10-00-18
3	Screw	9382	9382	9382	9382	9382
4	Nylon/ Aluminum Centering Bar Assembly	ASSY-SCD-1700-N	ASSY-SCD-2000-S001-N	ASSY-SCD-2400-S001-N	ASSY-SCD-2600-S001-N	ASSY-SCD-3000-S001-N
5	Aluminum Base Frame	7128-M-10	7128-M-10	7128-M-10	7128-M-10	7128-M-10
6	Anchor Screw	9397	9397	9397	9397	9397
7	Cover Screw with Spring	8325	8325	8325	8325	8325



50 MM WAY
PENDERGRASS, GA. 30567
706-824-7500 PHONE

www.mm.systems

For Spec-Data, Install Guides, and other data visit www.mm.systems

RIGHTS OF DESIGN

All rights of design, detail, engineering and/or invention contained herein are the property of MM Systems and hereby reserved and are not to be reproduced or provided to any other party. MM Systems reserves the right to amend or withdraw any information contained herein without notice and will not be liable for any inaccuracy or ambiguity of said information.

Seismic No-Bump Flush Metal Cover Expansion Joint

SNF Series (1000-1800)

Drawn by: LRM	Scale: NTS	Drawing Number: 16000-01
SHT. 3 OF 3	Issue Date: 01/03/2023	