

SMS Series Expansion Joint

Series 1400 through 2400

(Slab-to-Slab)



50 MM WAY
PENDERGRASS, GA. 30567
706-824-7500 PHONE

www.mm.systems

For Spec-Data, Install Guides, and other data visit www.mm.systems

RIGHTS OF DESIGN

All rights of design, detail, engineering and/or invention contained herein are the property of MM Systems and hereby reserved and are not to be reproduced or provided to any other party. MM Systems reserves the right to amend or withdraw any information contained herein without notice and will not be liable for any inaccuracy or ambiguity of said information.

Surface Mount Seismic Cover Expansion Joint

SMS Series (1400-2400) / 50% Movement






Drawn by: LRM	Scale: NTS	Drawing Number:
SHT. 1 OF 3	Issue Date: 01/07/2025	31100-02A

SMS SERIES EXPANSION JOINT MOVEMENT CHART (1400-2400) / 50% Movement

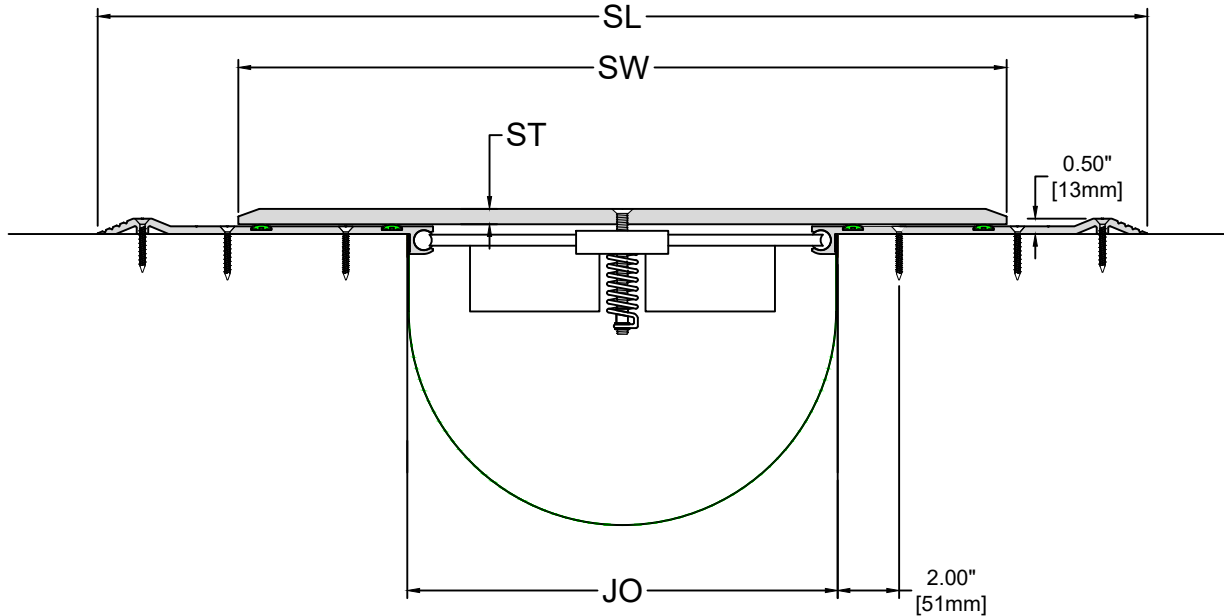
Model Number	Joint Opening (JO ^N)		Sight Line (SL ^N)		Thermal Movement (JO ^T)				Seismic Movement (JO ^S)				Total (JO ^A)		Slide Plate		Slide Plate Width	
	Nominal		Nominal		Minimum		Maximum		Minimum		Maximum		Movement		Thickness (ST)		(SW)	
SMS-1400	14.00	356	34.15	867	12.00	305	16.00	406	7.00	178	21.00	533	14.00	356	0.500	13	25.00	635
SMS-1600	16.00	406	36.15	918	14.00	356	18.00	457	8.00	203	24.00	610	16.00	406	0.500	13	28.00	711
SMS-1800	18.00	457	38.15	969	16.00	406	20.00	508	9.00	229	27.00	686	18.00	457	0.625	16	29.50	749
SMS-2000	20.00	508	40.15	1020	18.00	457	22.00	559	10.00	254	30.00	762	20.00	508	0.625	16	31.00	787
SMS-2200	22.00	559	42.15	1071	20.00	508	24.00	610	11.00	279	33.00	838	22.00	559	0.625	16	34.00	864
SMS-2400	24.00	610	44.15	1121	22.00	559	26.00	660	12.00	305	36.00	914	24.00	610	0.625	16	37.00	940

Dimension shown in **inches** (bold) and millimeters. Refer to the SMS AutoCAD file for individual system drawings.

LOAD TABLE

	ADA Compliant
	Maintenance Cart
	Auto (Low Speed)
	Passenger Cart
	Emergency Vehicle (Low Speed)

Note: The SMS loading capabilities shown above are based upon average equipment weights, wheel types and sizes. For project-specific loading capabilities, contact MM Systems with technical data related to wheel type, contact area (footprint), distributed load per wheel, and speed of traffic.



50 MM WAY
PENDERGRASS, GA. 30567
706-824-7500 PHONE

www.mm.systems

For Spec-Data, Install Guides, and other data visit www.mm.systems

RIGHTS OF DESIGN

All rights of design, detail, engineering and/or invention contained herein are the property of MM Systems and hereby reserved and are not to be reproduced or provided to any other party. MM Systems reserves the right to amend or withdraw any information contained herein without notice and will not be liable for any inaccuracy or ambiguity of said information.

Surface Mount Seismic Cover Expansion Joint

SMS Series (1400-2400) / 50% Movement

Drawn by:
LRM

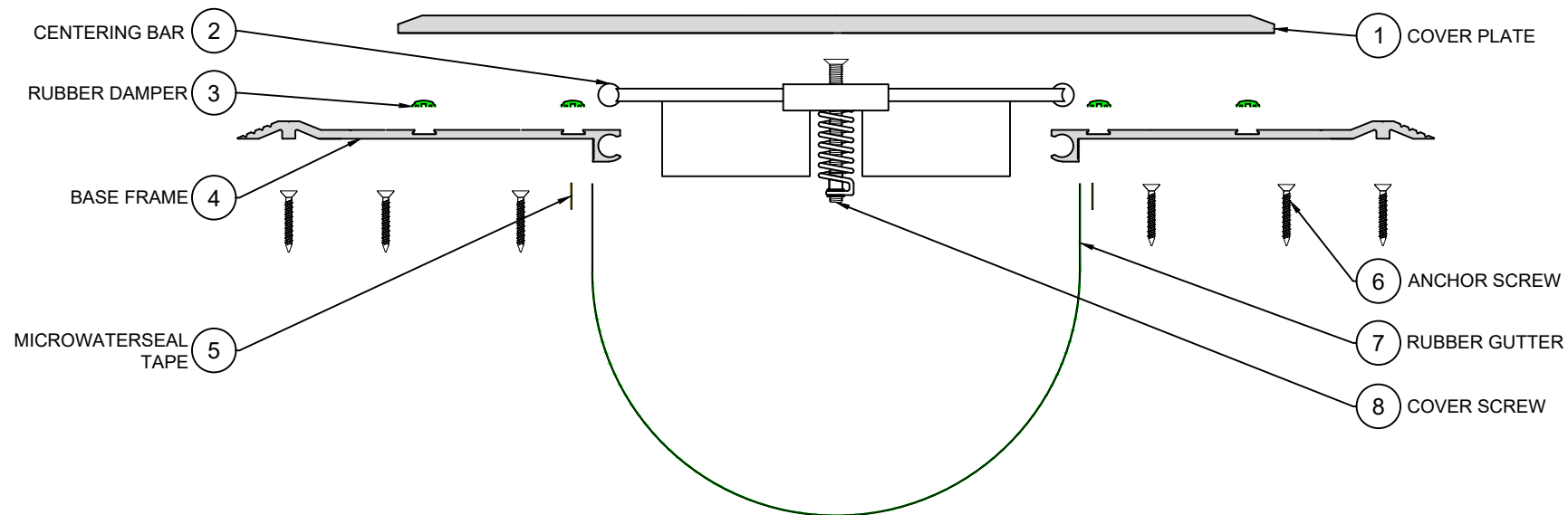
Scale:
NTS

Drawing Number:

SHT. 2 OF 3

Issue Date:
01/07/2025

31100-02A



EXPLODED VIEW ▲

PART NUMBERS ▼

Locator	Part Component	SMS-1400	SMS-1600	SMS-1800	SMS-2000	SMS-2200	SMS-2400
1	Cover Plate	CPEF-AT-10-2500-02-18	CPEF-AT-10-2800-02-18	CPEG-AT-05-2950-02-12	CPEG-AT-05-3100-02-12	CPEG-AT-05-3400-02-12	CPEG-AT-05-3700-02-12
2	Centering Bar	ASSY-SCD-2400-S001-v2	ASSY-SCD-2600-S001-v2	ASSY-SCD-2800-S001-v2	ASSY-SCD-3300-S001-v2	ASSY-SCD-3600-S001-v2	ASSY-SCD-4100-S001-v2
3	Rubber Damper	8461-65	8461-65	8461-65	8461-65	8461-65	8461-65
4	Base Frame	ASSY-71377142-M-10-00-18	ASSY-71377142-M-10-00-18	ASSY-71377142-M-10-00-18	ASSY-71377142-M-10-00-18	ASSY-71377142-M-10-00-18	ASSY-71377142-M-10-00-18
5	Microwaterseal Tape	Microwaterseal60X3/4	Microwaterseal60X3/4	Microwaterseal60X3/4	Microwaterseal60X3/4	Microwaterseal60X3/4	Microwaterseal60X3/4
6	Anchor Screw	9377	9377	9377	9377	9377	9377
7	Rubber Gutter	9109-14	9109-18	9109-24	9109-26	9109-26	9109-26
8	Cover Screw	8325	8325	8325	8325	8325	8325



50 MM WAY
PENDERGRASS, GA. 30567
706-824-7500 PHONE

www.mm.systems

For Spec-Data, Install Guides, and other data visit www.mm.systems

RIGHTS OF DESIGN

All rights of design, detail, engineering and/or invention contained herein are the property of MM Systems and hereby reserved and are not to be reproduced or provided to any other party. MM Systems reserves the right to amend or withdraw any information contained herein without notice and will not be liable for any inaccuracy or ambiguity of said information.

Surface Mount Seismic Cover Expansion Joint

SMS Series (1400-2400) / 50% Movement

Drawn by:

LRM

Scale:

NTS

Drawing Number:

Issue Date:
01/07/2025

31100-02A

SHT. 3 OF 3