

SMS-C Series Expansion Joint

Sizes 1400 through 2400 (Slab-to-Wall)



50 MM WAY
PENDERGRASS, GA. 30567
706-824-7500 PHONE

www.mm.systems

For Spec-Data, Install Guides, and other data visit www.mm.systems

RIGHTS OF DESIGN

All rights of design, detail, engineering and/or invention contained herein are the property of MM Systems and hereby reserved and are not to be reproduced or provided to any other party. MM Systems reserves the right to amend or withdraw any information contained herein without notice and will not be liable for any inaccuracy or ambiguity of said information.

Surface Mount Seismic Cover Expansion Joint

SMS-C Series (1400-2400) / 50% Movement






Drawn by: LRM	Scale: NTS	Drawing Number:
SHT. 1 OF 3	Issue Date: 01/07/2025	31100-04A

SMS-C SERIES EXPANSION JOINT MOVEMENT CHART (1400-2400) / 50% Movement

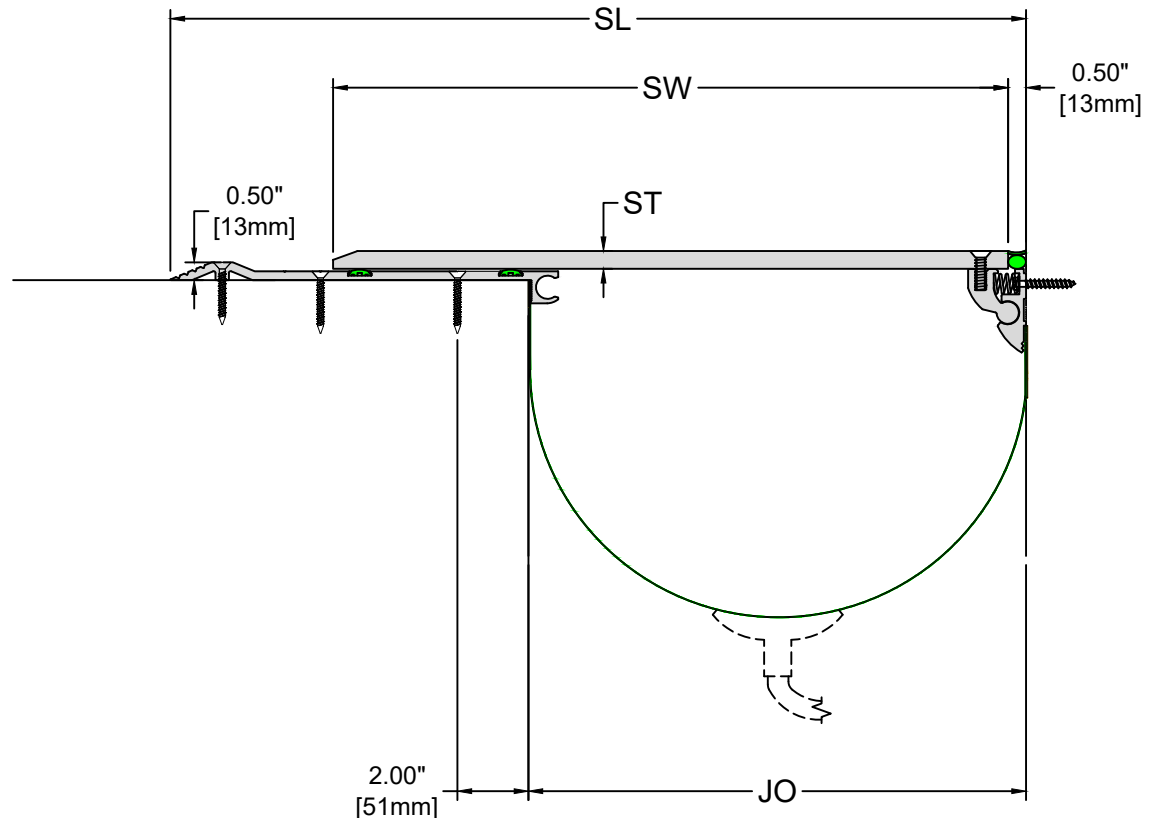
Model Number	Joint Opening (JO ^N)		Sight Line (SL ^N)		Thermal Movement (JO ^T)				Seismic Movement (JO ^S)				Total (JO ^A)		Slide Plate Thickness (ST)		Slide Plate Width (SW)	
	Nominal		Nominal		Minimum		Maximum		Minimum		Maximum		Movement					
SMS-C-1400	14.00	356	24.08	612	13.00	330	15.00	381	10.50	267	17.50	445	7.00	179	0.50	13	19.00	483
SMS-C-1600	16.00	406	26.08	662	15.00	381	17.00	432	12.00	305	20.00	508	8.00	203	0.50	13	21.50	546
SMS-C-1800	18.00	457	28.08	713	17.00	432	19.00	483	13.50	343	22.50	572	9.00	229	0.625	16	23.25	591
SMS-C-2000	20.00	508	30.08	764	19.00	483	21.00	533	15.00	381	25.00	635	10.00	254	0.625	16	25.00	635
SMS-C-2200	22.00	559	32.08	815	21.00	533	23.00	584	16.50	419	27.50	699	11.00	279	0.625	16	27.50	699
SMS-C-2400	24.00	610	34.08	866	23.00	584	25.00	635	18.00	457	30.00	762	12.00	305	0.625	16	30.00	762

Dimension shown in **inches** (bold) and millimeters. Refer to the SMS-C AutoCAD file for individual system drawings.

LOAD TABLE

	ADA Compliant
	Maintenance Cart
	Auto (Low Speed)
	Passenger Cart
	Emergency Vehicle (Low Speed)

Note: The SMS-C loading capabilities shown above are based upon average equipment weights, wheel types and sizes. For project-specific loading capabilities, contact MM Systems with technical data related to wheel type, contact area (footprint), distributed load per wheel, and speed of traffic.



50 MM WAY
PENDERGRASS, GA. 30567
706-824-7500 PHONE

www.mm.systems

For Spec-Data, Install Guides, and other data visit www.mm.systems

RIGHTS OF DESIGN

All rights of design, detail, engineering and/or invention contained herein are the property of MM Systems and hereby reserved and are not to be reproduced or provided to any other party. MM Systems reserves the right to amend or withdraw any information contained herein without notice and will not be liable for any inaccuracy or ambiguity of said information.

Surface Mount Seismic Cover Expansion Joint

SMS-C Series (1400-2400) / 50% Movement

Drawn by:
LRM

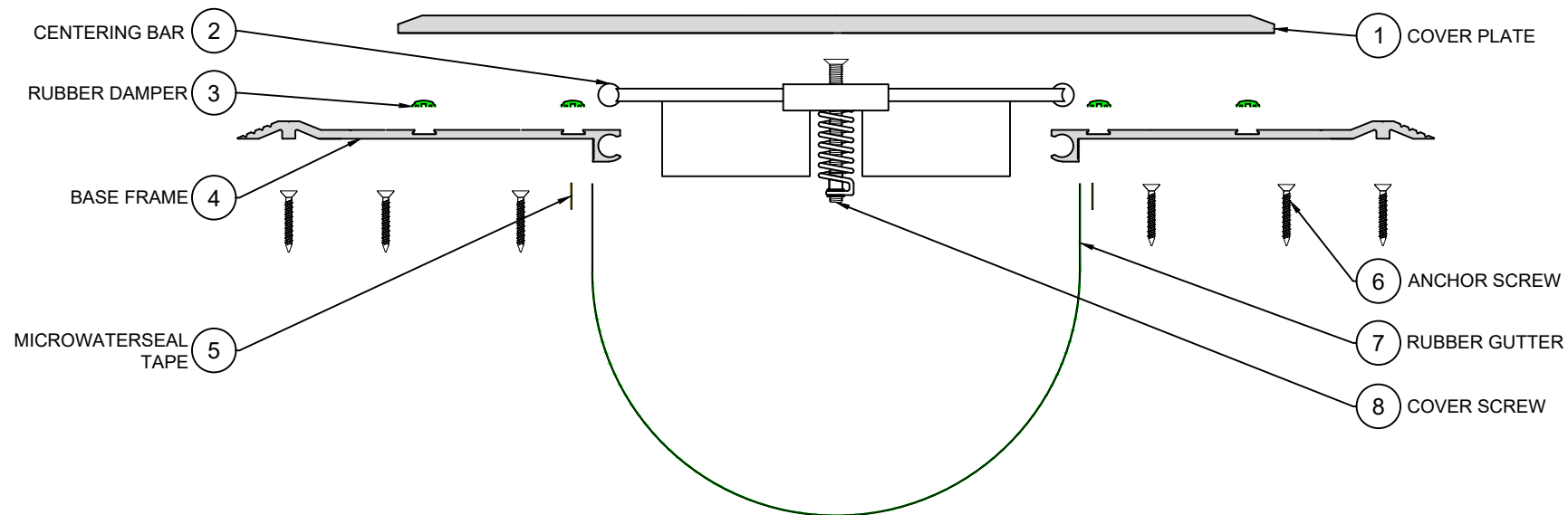
Scale:
NTS

Drawing Number:

SHT. 2 OF 3

Issue Date:
01/07/2025

31100-04A



EXPLODED VIEW ▲

PART NUMBERS ▼

Locator	Part Component	SMS-1400	SMS-1600	SMS-1800	SMS-2000	SMS-2200	SMS-2400
1	Cover Plate	CPEF-AT-10-2500-02-18	CPEF-AT-10-2800-02-18	CPEG-AT-05-2950-02-12	CPEG-AT-05-3100-02-12	CPEG-AT-05-3400-02-12	CPEG-AT-05-3700-02-12
2	Centering Bar	ASSY-SCD-2400-S001-v2	ASSY-SCD-2600-S001-v2	ASSY-SCD-2800-S001-v2	ASSY-SCD-3300-S001-v2	ASSY-SCD-3600-S001-v2	ASSY-SCD-4100-S001-v2
3	Rubber Damper	8461-65	8461-65	8461-65	8461-65	8461-65	8461-65
4	Base Frame	ASSY-71377142-M-10-00-18	ASSY-71377142-M-10-00-18	ASSY-71377142-M-10-00-18	ASSY-71377142-M-10-00-18	ASSY-71377142-M-10-00-18	ASSY-71377142-M-10-00-18
5	Microwaterseal Tape	Microwaterseal60X3/4	Microwaterseal60X3/4	Microwaterseal60X3/4	Microwaterseal60X3/4	Microwaterseal60X3/4	Microwaterseal60X3/4
6	Anchor Screw	9377	9377	9377	9377	9377	9377
7	Rubber Gutter	9109-14	9109-18	9109-24	9109-26	9109-26	9109-26
8	Cover Screw	8325	8325	8325	8325	8325	8325



50 MM WAY
PENDERGRASS, GA. 30567
706-824-7500 PHONE

www.mm.systems

For Spec-Data, Install Guides, and other data visit www.mm.systems

RIGHTS OF DESIGN

All rights of design, detail, engineering and/or invention contained herein are the property of MM Systems and hereby reserved and are not to be reproduced or provided to any other party. MM Systems reserves the right to amend or withdraw any information contained herein without notice and will not be liable for any inaccuracy or ambiguity of said information.

Surface Mount Seismic Cover Expansion Joint

SMS-C Series (1400-2400) / 50% Movement

Drawn by:

LRM

Scale:

NTS

Drawing Number:

Issue Date:

01/07/2025

31100-04A

SHT. 3 OF 3