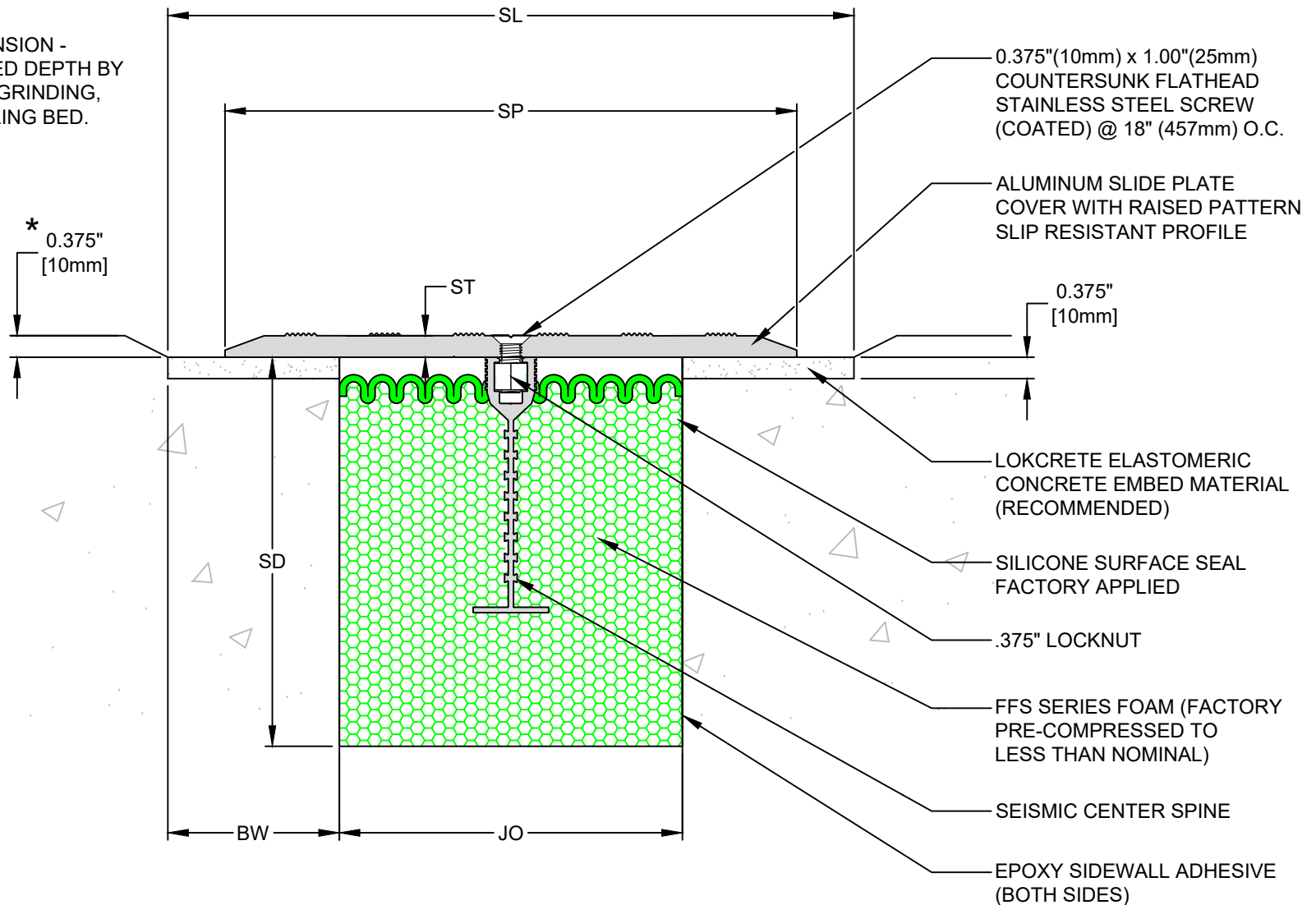


* IMPORTANT DIMENSION -
ACHIEVE REQUIRED DEPTH BY
EXACT FORMING, GRINDING,
MILLING OR LEVELING BED.



SHD Series Expansion Joint Sizes 300 through 1200 (Slab-to-Slab)



50 MM WAY
PENDERGRASS, GA. 30567
706-824-7500 PHONE

www.mm.systems

For Spec-Data, Install Guides, and other data visit www.mm.systems

RIGHTS OF DESIGN

All rights of design, detail, engineering and/or invention contained herein are the property of MM Systems and hereby reserved and are not to be reproduced or provided to any other party. MM Systems reserves the right to amend or withdraw any information contained herein without notice and will not be liable for any inaccuracy or ambiguity of said information.






Self-Healing Dual Seismic Seal System

SHD Series (300-1200)

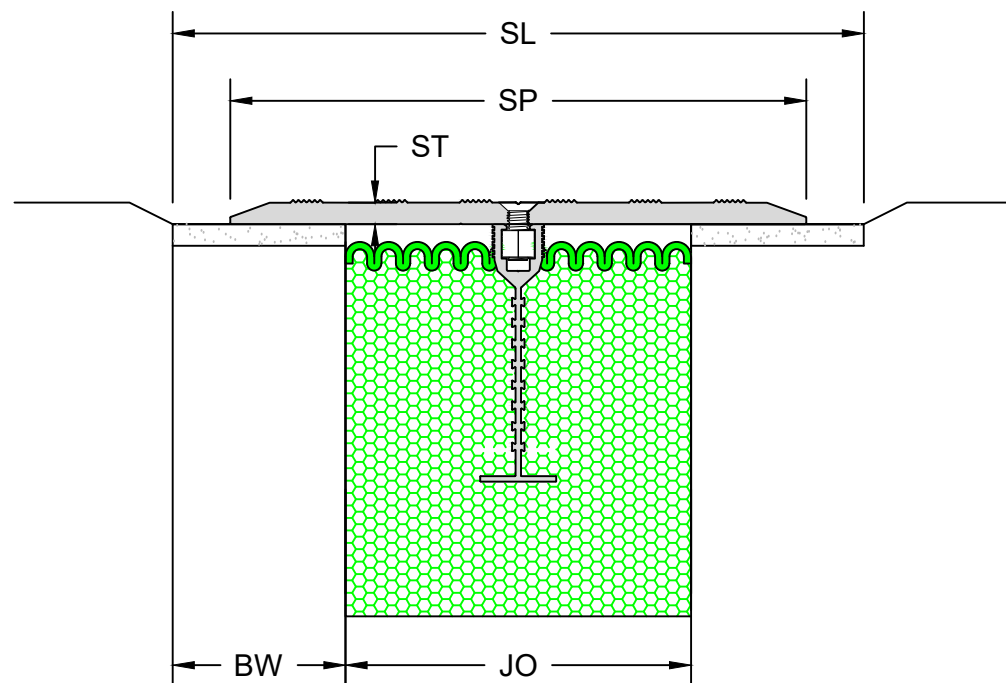
Drawn by: LRM	Scale: NTS	Drawing Number:
SHT. 1 OF 3	Issue Date: 01/07/2025	30000-01

SHD SERIES EXPANSION JOINT MOVEMENT CHART																
Model Number	Joint Opening (JO ^N)		Sight Line (SL ^N)		Thermal Movement (JO ^T)				Seismic Movement (JO ^S)				Total (JO ^A)		Slide Plate Thickness (ST)	
	Nominal		Nominal		Minimum		Maximum		Minimum		Maximum		Movement			
SHD-300	3.00	76	7.50	191	1.50	38	4.50	114	1.50	38	4.50	114	3.00	76	0.250	6
SHD-400	4.00	102	7.50	191	2.00	51	6.00	152	2.00	51	6.00	152	4.00	102	0.25	6
SHD-500	5.00	127	10.00	254	3.00 76		7.00 178		2.50 64		7.50 191		5.00 127		0.375 10	
SHD-600	6.00	152	10.00	254	4.00	102	8.00	203	3.00	76	9.00	229	6.00	152	0.375	10
SHD-700	7.00	178	13.50	343	5.00 127		9.00 229		3.50 89		10.50 267		7.00 178		0.375 10	
SHD-800	8.00	203	13.50	343	6.00	152	10.00	254	4.00	102	12.00	305	8.00	203	0.375	10
SHD-900	9.00	229	16.00	406	7.00 178		11.00 279		4.50 114		13.50 343		9.00 229		0.375 10	
SHD-1000	10.00	254	16.00	406	8.00	203	12.00	305	5.00	127	15.00	381	10.00	254	0.375	10
SHD-1100	11.00	279	18.50	470	9.00 229		13.00 330		5.50 140		16.50 419		11.00 279		0.50 13	
SHD-1200	12.00	305	18.50	470	10.00 254		14.00 356		6.00 152		18.00 457		12.00 305		0.50 13	

Dimension shown in **inches** (bold) and millimeters. Refer to the SHD AutoCAD file for individual system drawings.

LOAD TABLE	
	Rain Resistant
	Hand Truck
	Shopping Cart
	Maintenance Cart
	Safe Walking Surface

Note: The SHD loading capabilities shown above are based upon average equipment weights, wheel types and sizes. For project-specific loading capabilities, contact MM Systems with technical data related to wheel type, contact area (footprint), distributed load per wheel, and speed of traffic.



50 MM WAY
PENDERGRASS, GA. 30567
706-824-7500 PHONE

www.mm.systems

For Spec-Data, Install Guides, and other data visit www.mm.systems

RIGHTS OF DESIGN

All rights of design, detail, engineering and/or invention contained herein are the property of MM Systems and hereby reserved and are not to be reproduced or provided to any other party. MM Systems reserves the right to amend or withdraw any information contained herein without notice and will not be liable for any inaccuracy or ambiguity of said information.

Self-Healing Dual Seismic Seal System

SHD Series (300-1200)

Drawn by:

LRM

Scale:

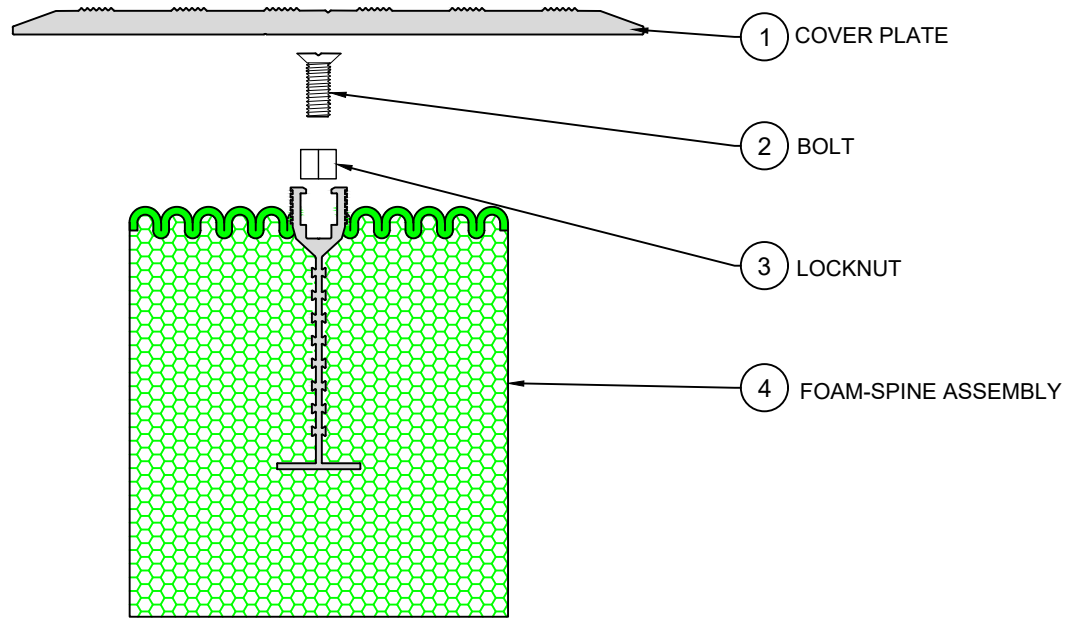
NTS

Drawing Number:

SHT. 2 OF 3

Issue Date:
01/07/2025

30000-01



NOTE: LOKCRETE® BEDDING COMPOUND
(8333) Not shown.

EXPLODED VIEW ▲

PART NUMBERS ▼

Locator	Part Component	SHD-300	SHD-400	SHD-500	SHD-600	SHD-700	SHD-800	SHD-900	SHD-1000	SHD-1100	SHD-1200
1	Cover Plate	7146	7146	7147	7147	7148	7148	7149	7149	7150	7150
2	Bolt	9034-1	9034-1	9034-1	9034-1	9034-1	9034-1	9034-1	9034-1	9034-1	9034-1
3	Locknut	8328	8328	8328	8328	8328	8328	8328	8328	8328	8328
4	Foam-Spine Assembly	ASSY-FOAMSPI NE-300	ASSY-FOAMSPI NE-400	ASSY-FOAMSPI NE-500	ASSY-FOAMSPI NE-600	ASSY-FOAMSPI NE-700	ASSY-FOAMSPI NE-800	ASSY-FOAMSPI NE-900	ASSY-FOAMSPI NE-1000	ASSY-FOAMSPI NE-1100	ASSY-FOAMSPI NE-1200



50 MM WAY
PENDERGRASS, GA. 30567
706-824-7500 PHONE

www.mm.systems

For Spec-Data, Install Guides, and other data visit www.mm.systems

RIGHTS OF DESIGN

All rights of design, detail, engineering and/or invention contained herein are the property of MM Systems and hereby reserved and are not to be reproduced or provided to any other party. MM Systems reserves the right to amend or withdraw any information contained herein without notice and will not be liable for any inaccuracy or ambiguity of said information.

Self-Healing Dual Seismic Seal System SHD Series (300-1200)

Drawn by: LRM	Scale: NTS	Drawing Number:
SHT. 3 OF 3	Issue Date: 01/07/2025	30000-01