

SCF-C Series Adjustable Height Expansion Joint
Sizes 150 through 600
 (Slab-to-Wall)



MM[®]
SYSTEMS

50 MM WAY
 PENDERGRASS, GA. 30567
 706-824-7500 PHONE

www.mm.systems

For Spec-Data, Install Guides, and other data visit www.mm.systems

RIGHTS OF DESIGN

All rights of design, detail, engineering and/or invention contained herein are the property of MM Systems and hereby reserved and are not to be reproduced or provided to any other party. MM Systems reserves the right to amend or withdraw any information contained herein without notice and will not be liable for any inaccuracy or ambiguity of said information.

Split Slab Membrane with Cover Plate System

SCF-C Adjustable Height Series (150-600)

Drawn by: LRM	Scale: NTS	Drawing Number:
SHT. 1 OF 3	Issue Date: 03/07/2025	10300-02

SCF SERIES EXPANSION JOINT MOVEMENT CHART

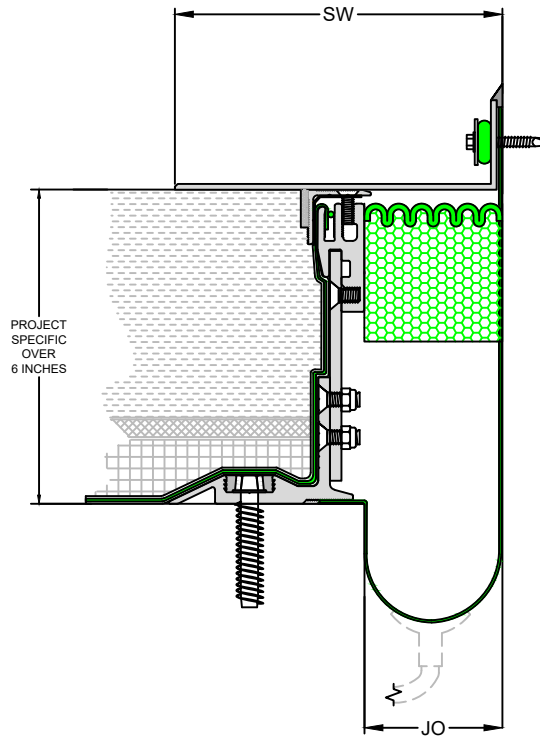
Model Number	Joint Opening (JO ^N)		Slide Plate Width (SW ^N)		Thermal/Seismic Movement (JO ^T)				Total (JO ^A)	
	Nominal		Nominal		Minimum		Maximum		Movement	
SCF-C-150-AH	1.50	38	5.63	143	0.75	19	2.25	57	1.50	38
SCF-C-200-AH	2.00	51	4.625	117	1.00	25	3.00	76	2.00	51
SCF-C-300-AH	3.00	76	5.625	143	1.50	38	4.50	114	3.00	76
SCF-C-400-AH	4.00	102	6.625	168	2.00	51	6.00	152	4.00	102
SCF-C-500-AH	5.00	127	7.625	194	2.50	64	7.50	191	5.00	127
SCF-C-600-AH	6.00	152	8.625	219	3.00	76	9.00	229	6.00	152

Dimension shown in **inches** (bold) and millimeters. Refer to the SCF Adjustable Height AutoCAD file for individual system drawings. Please see SSF product family for split slab foam expansion joint system less than 4" without a cover plate.

LOAD TABLE

	ADA Compliant
	Safe Walking Surface
	Shopping Cart
	Maintenance Cart
	Extreme Weather

Note: The SCF-AH-C loading capabilities shown above are based upon average equipment weights, wheel types and sizes. For project-specific loading capabilities, contact MM Systems with technical data related to wheel type, contact area (footprint), distributed load per wheel, and speed of traffic.



Base Angle	System	
Size	Height (SH)	
4 x 2	3.25	83
4 x 2.25	3.5	89
4 x 2.5	3.75	95
4 x 2.75	4	102
4 x 3	4.25	108
4 x 3.25	4.5	114
4 x 3.5	4.75	121
4 x 3.75	5	127
4 x 4	5.25	133
4 x 4.25	5.5	140
4 x 4.5	5.75	146
4 x 4.75	6	152



50 MM WAY
PENDERGRASS, GA. 30567
706-824-7500 PHONE

www.mm.systems

For Spec-Data, Install Guides, and other data visit www.mm.systems

RIGHTS OF DESIGN

All rights of design, detail, engineering and/or invention contained herein are the property of MM Systems and hereby reserved and are not to be reproduced or provided to any other party. MM Systems reserves the right to amend or withdraw any information contained herein without notice and will not be liable for any inaccuracy or ambiguity of said information.

Split Slab Membrane with Cover Plate System

SCF-C Adjustable Height Series (150-600)

Drawn by:
LRM

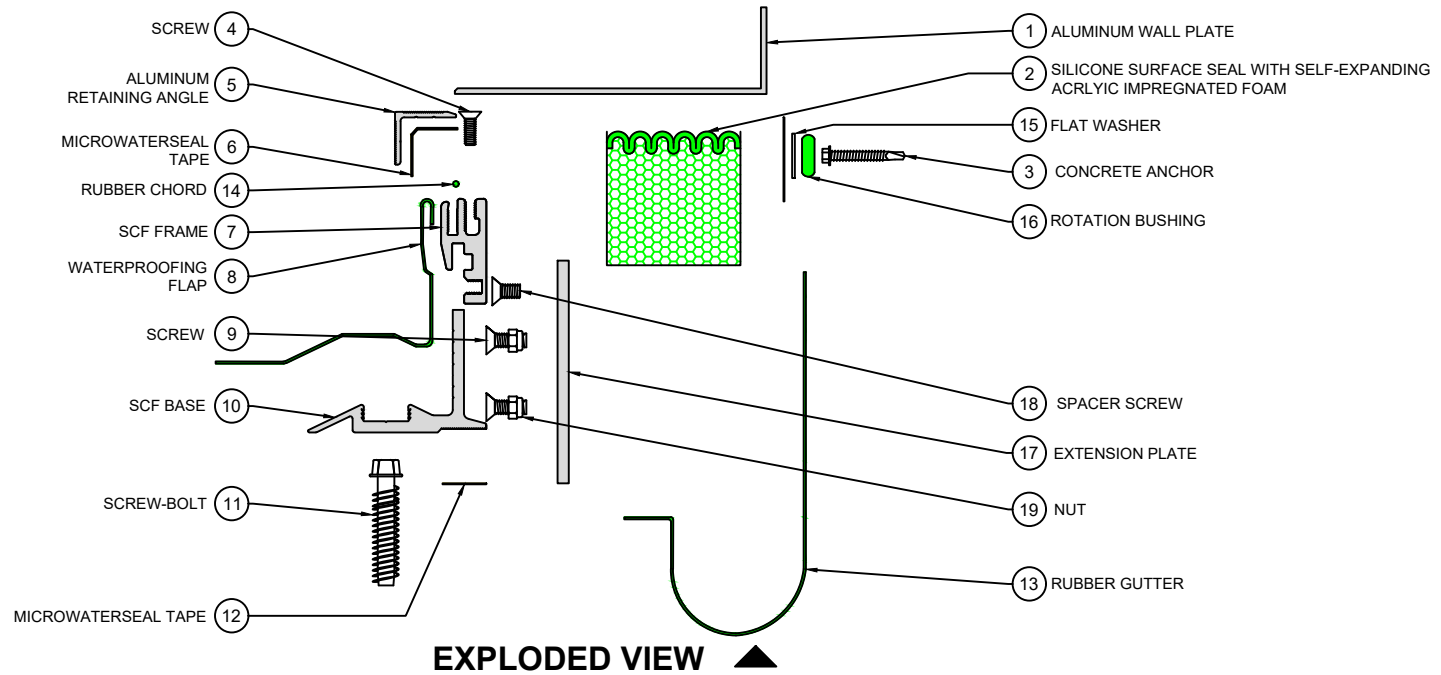
SHT. 2 OF 3

Scale:
NTS

Issue Date:
03/07/2025

Drawing Number:

10300-02



PART NUMBERS ▼

Locator	Part Component	SCF-C-150-AH	SCF-C-200-AH	SCF-C-300-AH	SCF-C-400-AH	SCF-C-500-AH	SCF-C-600-AH
1	Aluminum Wall Plate	WAAA-AM-10-0508-00-1 8	WAAA-AM-10-0600-00-1 8	WAAB-AM-10-0700-00-1 8	WAAB-AM-10-0800-00-1 8	WAAB-AM-10-0900-00-1 8	WAAC-AM-10-1008-00-1 8
2	Self Expanding Foam	8470-150	8470-200	8470-300	8470-400	8470-500	8470-600
3	Concrete Anchor	9402	9402	9402	9402	9402	9402
4	Screw	9382	9382	9382	9382	9382	9382
5	Aluminum Retaining Angle	7025-M-10	7025-M-10	7025-M-10	7025-M-10	7025-M-10	7025-M-10
6	Microwaterseal Tape	Microwaterseal30X2	Microwaterseal30X2	Microwaterseal30X2	Microwaterseal30X2	Microwaterseal30X2	Microwaterseal30X2
7	SCF Frame	8346	8346	8346	8346	8346	8346
8	Waterproofing Flap	9118-12	9118-12	9118-12	9118-12	9118-12	9118-12
9	Screw	9334	9334	9334	9334	9334	9334
10	SCF Base	See Base Frame Chart	See Base Frame Chart	See Base Frame Chart	See Base Frame Chart	See Base Frame Chart	See Base Frame Chart
11	Screw-Bolt	7420	7420	7420	7420	7420	7420
12	Microwaterseal Tape	Microwaterseal60X1	Microwaterseal60X1	Microwaterseal60X1	Microwaterseal60X1	Microwaterseal60X1	Microwaterseal60X1
13	Rubber Gutter	9109-12	9109-12	9109-12	9109-12	9109-12	9109-12
14	Rubber Chord	9457	9457	9457	9457	9457	9457
15	Flat Washer	8312-1/4	8312-1/4	8312-1/4	8312-1/4	8312-1/4	8312-1/4
16	Rotation Bushing	9455	9455	9455	9455	9455	9455
17	Spacer Frame	Project Specific	Project Specific	Project Specific	Project Specific	Project Specific	Project Specific
18	Spacer Screw	9348	9348	9348	9348	9348	9348

Frame Height	Base Frame
3.25"	7431#0200
3.50"	7431#0204
3.75"	7431#0208
4.00"	7431#0212
4.25"	7431#0300
4.50"	7431#0304
4.75"	7431#0308
5.00"	7431#0312
5.25"	7431#0400
5.50"	7431#0404
5.75"	7431#0408
6.00"	7431



50 MM WAY
PENDERGRASS, GA. 30567
706-824-7500 PHONE

www.mm.systems

For Spec-Data, Install Guides, and other data visit www.mm.systems

RIGHTS OF DESIGN

All rights of design, detail, engineering and/or invention contained herein are the property of MM Systems and hereby reserved and are not to be reproduced or provided to any other party. MM Systems reserves the right to amend or withdraw any information contained herein without notice and will not be liable for any inaccuracy or ambiguity of said information.

Split Slab Membrane with Cover Plate System

SCF-C Adjustable Height Series (150-600)

Drawn by:
LRM

SHT. 3 OF 3

Scale:
NTS

Issue Date:
03/07/2025

Drawing Number:

10300-02