

PDS Series Expansion Joint
Sizes 200 through 2400
(Slab-to-Slab)



50 MM WAY
 PENDERGRASS, GA. 30567
 706-824-7500 PHONE

www.mm.systems

For Spec-Data, Install Guides, and other data visit www.mm.systems

RIGHTS OF DESIGN

All rights of design, detail, engineering and/or invention contained herein are the property of MM Systems and hereby reserved and are not to be reproduced or provided to any other party. MM Systems reserves the right to amend or withdraw any information contained herein without notice and will not be liable for any inaccuracy or ambiguity of said information.

Pan Design Seismic System Expansion Joint






PDS Series (Sizes 200-2400)

Drawn by: LRM	Scale: NTS	Drawing Number: 10100-01C
SHT. 1 OF 3	Issue Date: 03/04/2025	

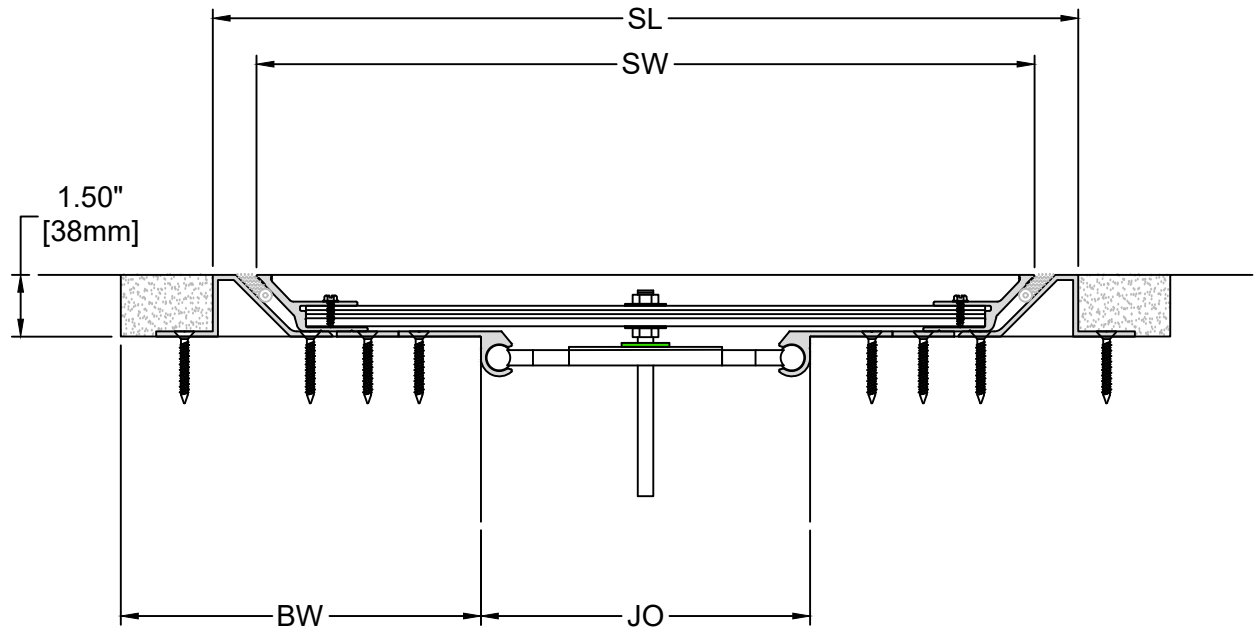
PDS SERIES EXPANSION JOINT MOVEMENT CHART

Model Number	Joint Opening (JO ^N)		Sight Line (SL ^N)		Thermal Movement (JO ^T)				Seismic Movement (JO ^S)				Total (JO ^A)		Slide Plate Width (SW)		Blockout Width (BW)	
	Nominal		Nominal		Minimum	Maximum	Minimum	Maximum	Minimum	Maximum	Minimum	Maximum	Minimum	Maximum	Minimum	Maximum	Nominal	
PDS-200	2.00	51	11.91	303	1.00	25	2.75	70	1.00	25	3.00	76	2.00	51	9.78	248	7.00	178
PDS-300	3.00	76	12.02	305	1.50	38	4.75	121	2.00	51	6.00	152	4.50	114	9.51	252	8.50	216
PDS-400	4.00	102	13.03	331	2.00	51	4.75	121	2.50	64	8.00	203	6.00	152	10.71	277	6.875	175
PDS-500	5.00	127	15.02	382	2.50	64	5.75	146	2.50	64	10.00	254	7.50	191	12.91	328	7.375	187
PDS-600	6.00	152	17.03	432	3.00	76	6.75	171	2.50	64	12.00	305	9.50	241	14.91	379	7.875	200
PDS-700	7.00	178	19.03	483	3.50	89	7.75	197	2.50	64	14.00	336	11.50	292	16.91	429	8.25	210
PDS-800	8.00	203	21.03	534	4.00	102	8.75	222	2.50	64	16.00	406	13.50	343	18.91	480	8.75	222
PDS-900	9.00	229	23.05	586	4.50	114	9.75	248	2.50	64	18.00	457	15.50	394	20.92	531	9.00	229
PDS-1000	10.00	254	25.03	636	5.00	127	10.75	273	2.50	64	20.00	508	17.50	445	22.91	582	9.75	235
PDS-1100	11.00	279	27.03	687	5.50	140	11.75	298	2.50	64	22.00	559	19.50	495	24.91	633	10.25	260
PDS-1200	12.00	305	29.03	737	6.00	152	12.75	324	2.50	64	24.00	610	21.50	546	26.91	684	10.75	273
PDS-1300	13.00	330	31.03	788	6.50	165	13.75	349	2.50	64	26.00	660	23.50	597	28.91	734	11.25	286
PDS-1400	14.00	356	33.03	839	7.00	178	14.75	375	2.50	64	28.00	711	25.50	648	30.91	785	11.75	299
PDS-1500	15.00	381	35.03	890	7.50	191	15.75	400	2.50	64	30.00	762	27.50	699	32.91	836	12.25	311
PDS-1600	16.00	406	37.03	941	8.00	203	16.75	425	2.50	64	32.00	813	29.50	749	34.91	887	12.75	324
PDS-1700	17.00	432	39.03	991	8.50	216	18.75	464	2.50	64	34.00	864	31.50	800	36.91	938	13.25	337
PDS-1800	18.00	457	41.03	1042	9.00	229	19.75	502	2.50	64	36.00	914	33.50	851	38.91	988	13.75	349
PDS-1900	19.00	483	43.03	1093	9.50	241	20.75	527	2.50	64	38.00	965	35.50	902	40.91	1039	14.25	362
PDS-2000	20.00	508	45.03	1144	10.00	254	21.75	552	2.50	64	40.00	1016	37.50	953	42.91	1090	14.75	375
PDS-2100	21.00	533	47.03	1195	10.50	267	22.75	578	2.50	64	42.00	1067	39.50	1003	44.91	1141	15.25	387
PDS-2200	22.00	559	49.03	1245	11.00	279	23.75	603	2.50	64	44.00	1118	41.50	1054	46.91	1192	15.75	400
PDS-2300	23.00	584	51.03	1296	11.50	292	24.75	629	2.50	64	46.00	1168	43.50	1105	48.91	1242	16.25	413
PDS-2400	24.00	610	53.03	1347	12.00	305	25.75	654	2.50	64	48.00	1219	45.50	1156	50.91	1293	16.75	426

Dimension shown in **inches** (bold) and millimeters. Refer to the PDS AutoCAD file for individual system drawings.

LOAD TABLE	
	Safe Walking Surface
	Passenger Cart
	Carpet Cleaner
	ADA Compliant
	Floor Scrubber

Note: The PDS loading capabilities shown above are based upon average equipment weights, wheel types and sizes. For project-specific loading capabilities, contact MM Systems with technical data related to wheel type, contact area (footprint), distributed load per wheel, and speed of traffic.



50 MM WAY
PENDERGRASS, GA. 30567
706-824-7500 PHONE

www.mm.systems

For Spec-Data, Install Guides, and other data visit www.mm.systems

RIGHTS OF DESIGN

All rights of design, detail, engineering and/or invention contained herein are the property of MM Systems and hereby reserved and are not to be reproduced or provided to any other party. MM Systems reserves the right to amend or withdraw any information contained herein without notice and will not be liable for any inaccuracy or ambiguity of said information.

Pan Design Seismic System Expansion Joint

PDS Series (Sizes 200-2400)

Drawn by:

LRM

Scale:

NTS

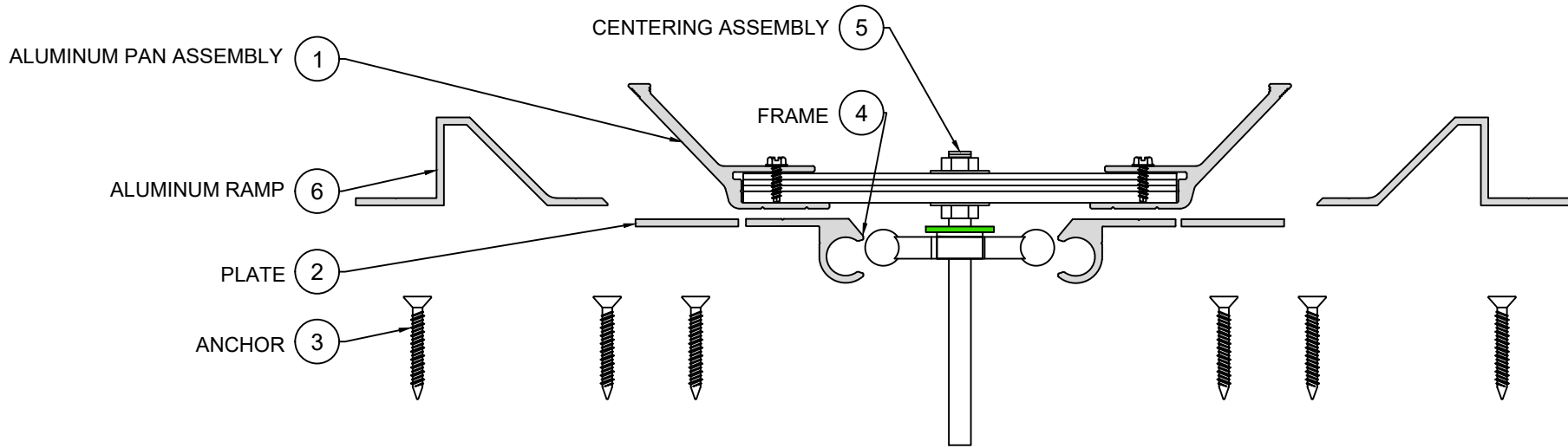
Drawing Number:

SHT. 2 OF 3

Issue Date:

03/04/2025

10100-01C



EXPLODED VIEW ▲

▼ PART NUMBERS

Locator	Part Component	PDS-200	PDS-300	PDS-400	PDS-500	PDS-600	PDS-700	PDS-800	PDS-900	PDS-1000	PDS-1100	PDS-1200
1	Aluminum Pan Assembly	ASSY-PAN090 4-150H-I	ASSY-PAN091 5-150H-I	ASSY-PAN101 5-150H-I	ASSY-PAN121 5-150H-I	ASSY-PAN141 5-150H-I	ASSY-PAN161 5-150H-I	ASSY-PAN181 5-150H-I	ASSY-PAN201 5-150H-I	ASSY-PAN221 5-150H-I	ASSY-PAN241 5-150H-I	ASSY-PAN261 5-150H-I
2	Plate	N/A	N/A	N/A	N/A	N/A	N/A	N/A	N/A	N/A	N/A	N/A
3	Anchor	9406	9406	9406	9406	9406	9406	9406	9406	9406	9406	9406
4	Frame	8494-M-10	8494-M-10	8494-M-10	8494-M-10	8494-M-10	8494-M-10	8494-M-10	8494-M-10	8494-M-10	8494-M-10	8494-M-10
5	Centering Assembly	ASSY-SCD-PD S-1000	ASSY-SCD-PD S-1000	ASSY-SCD-PD S-1000	ASSY-SCD-PD S-1000	ASSY-SCD-PD S-1000	ASSY-SCD-PD S-1000	ASSY-SCD-PD S-1200	ASSY-SCD-PD S-1400	ASSY-SCD-PD S-1400	ASSY-SCD-PD S-1800	ASSY-SCD-PD S-1800
6	Aluminum Ramp	8160-M-10	8160-M-10	8160-M-10	8160-M-10	8160-M-10	8160-M-10	8160-M-10	8160-M-10	8160-M-10	8160-M-10	8160-M-10

Locator	Part Component	PDS-1300	PDS-1400	PDS-1500	PDS-1600	PDS-1700	PDS-1800	PDS-1900	PDS-2000	PDS-2100	PDS-2200	PDS-2300	PDS-2400
1	Aluminum Pan Assembly	ASSY-PAN220 6-150H-I	ASSY-PAN231 4-150H-I	ASSY-PAN250 7-150H-I	ASSY-PAN261 5-150H-I	ASSY-PAN280 6-150H-I	ASSY-PAN291 5-150H-I	ASSY-PAN310 7-150H-I	ASSY-PAN321 4-150H-I	ASSY-PAN341 4-150H-I	ASSY-PAN351 5-150H-I	ASSY-PAN370 7-150H-I	ASSY-PAN381 5-150H-I
2	Plate	CPZA-AM-10-0 400-00-18	CPZA-AM-10-0 408-00-18	CPZA-AM-10-0 500-00-18	CPZA-AM-10-0 508-00-18	CPZA-AM-10-0 600-00-18	CPZA-AM-10-0 608-00-18	CPZA-AM-10-0 700-00-18	CPZA-AM-10-0 708-00-18	CPZA-AM-10-0 800-00-18	CPZA-AM-10-0 808-00-18	CPZA-AM-10-0 900-00-18	CPZA-AM-10-0 908-00-18
3	Anchor	9406	9406	9406	9406	9406	9406	9406	9406	9406	9406	9406	9406
4	Frame	8494-M-10	8494-M-10	8494-M-10	8494-M-10	8494-M-10	8494-M-10	8494-M-10	8494-M-10	8494-M-10	8494-M-10	8494-M-10	8494-M-10
5	Centering Assembly	ASSY-SCD-PD S-2000	ASSY-SCD-PD S-2000	ASSY-SCD-PD S-2400	ASSY-SCD-PD S-2400	ASSY-SCD-PD S-2400	ASSY-SCD-PD S-2800	ASSY-SCD-PD S-2800	ASSY-SCD-PD S-2800	ASSY-SCD-PD S-3200	ASSY-SCD-PD S-3200	ASSY-SCD-PD S-3400	ASSY-SCD-PD S-3400
6	Aluminum Ramp	8160-M-10	8160-M-10	8160-M-10	8160-M-10	8160-M-10	8160-M-10	8160-M-10	8160-M-10	8160-M-10	8160-M-10	8160-M-10	8160-M-10



50 MM WAY
PENDERGRASS, GA. 30567
706-824-7500 PHONE

www.mm.systems

For Spec-Data, Install Guides, and other data visit www.mm.systems

RIGHTS OF DESIGN

All rights of design, detail, engineering and/or invention contained herein are the property of MM Systems and hereby reserved and are not to be reproduced or provided to any other party. MM Systems reserves the right to amend or withdraw any information contained herein without notice and will not be liable for any inaccuracy or ambiguity of said information.

Pan Design Seismic System Expansion Joint

PDS Series (Sizes 200-2400)

Drawn by: LRM	Scale: NTS	Drawing Number: 10100-01C
SHT. 3 OF 3	Issue Date: 03/04/2025	