

## HSL-NE (.25) Expansion Joint

### Sizes 100 through 600

### (Floor-to-Floor)



50 MM WAY  
PENDERGRASS, GA. 30567  
706-824-7500 PHONE

[www.mm.systems](http://www.mm.systems)

For Spec-Data, Install Guides, and other data visit [www.mm.systems](http://www.mm.systems)

#### RIGHTS OF DESIGN

All rights of design, detail, engineering and/or invention contained herein are the property of MM Systems and hereby reserved and are not to be reproduced or provided to any other party. MM Systems reserves the right to amend or withdraw any information contained herein without notice and will not be liable for any inaccuracy or ambiguity of said information.

#### Hidden Sightline System Expansion Joint

#### HSL-NE (.25) Series (100-600)

Drawn by:

JRC

Scale:

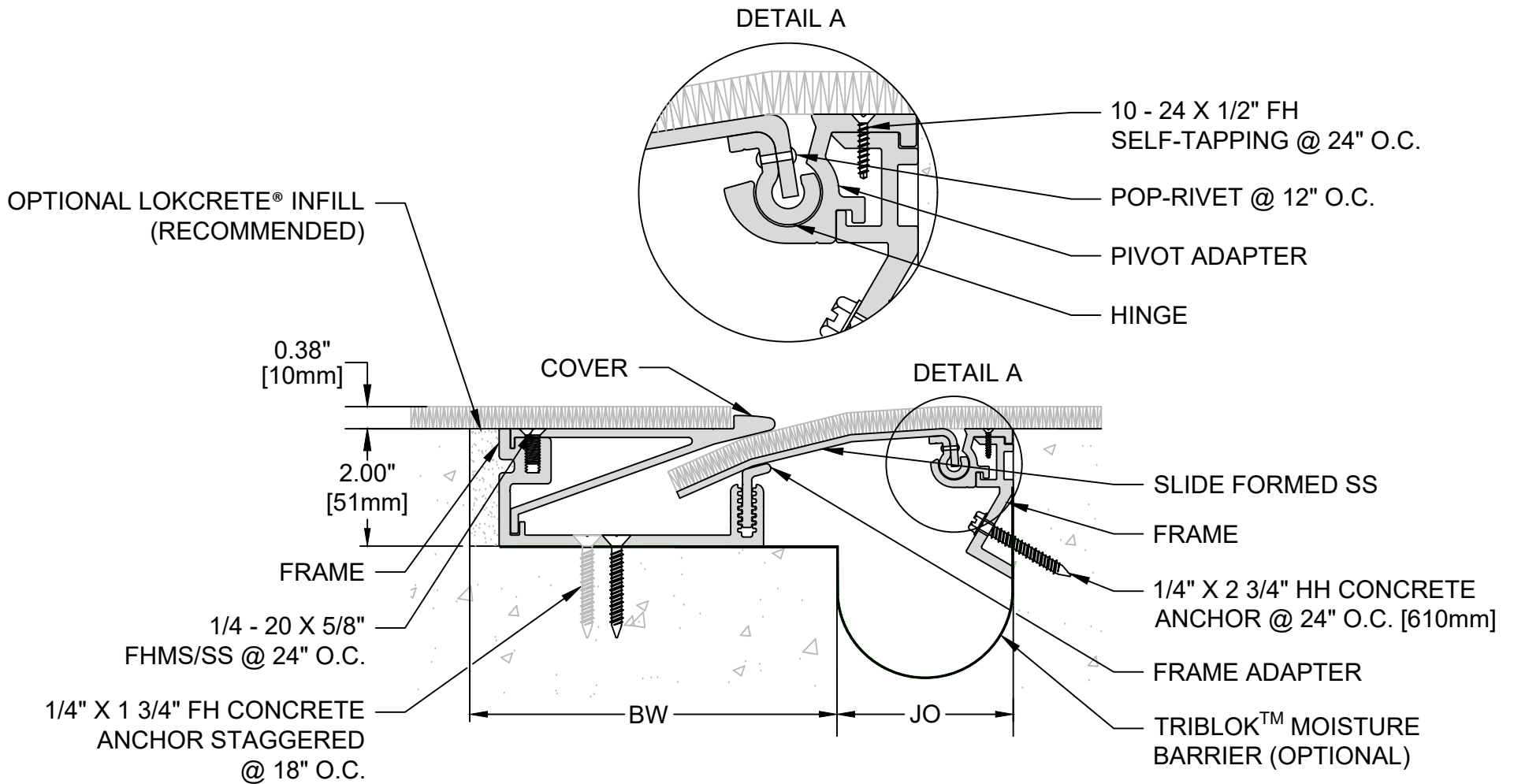
NTS

Drawing Number:

SHT. 1 OF 4

Issue Date:  
01/04/24

10000-02



## HSL-NE (.375) Expansion Joint

### Sizes 100 through 600 (Floor-to-Floor)



50 MM WAY  
PENDERGRASS, GA. 30567  
706-824-7500 PHONE

[www.mm.systems](http://www.mm.systems)

For Spec-Data, Install Guides, and other data visit [www.mm.systems](http://www.mm.systems)

#### RIGHTS OF DESIGN

All rights of design, detail, engineering and/or invention contained herein are the property of MM Systems and hereby reserved and are not to be reproduced or provided to any other party. MM Systems reserves the right to amend or withdraw any information contained herein without notice and will not be liable for any inaccuracy or ambiguity of said information.

#### Hidden Sightline System Expansion Joint

### HSL-NE (.375) Series (100-600)

Drawn by: JRC	Scale: NTS	Drawing Number:
SHT. 2 OF 4	Issue Date: 01/04/24	10000-02

# HSL-NE SERIES EXPANSION JOINT MOVEMENT CHART (100-600)

Model Number	Joint Opening (JO <sup>N</sup> )		Thermal Movement (JO <sup>T</sup> )				Seismic Movement (JO <sup>S</sup> )				Total (JO <sup>A</sup> )	
	Nominal		Minimum		Maximum		Minimum		Maximum		Movement	
HSL-NE-100	<b>1.00</b>	25	<b>0.88</b>	21	<b>1.25</b>	32	<b>0.81</b>	21	<b>3.00</b>	76	<b>2.19</b>	50
HSL-NE-200	<b>2.00</b>	51	<b>1.50</b>	38	<b>2.50</b>	63	<b>1.00</b>	25	<b>3.00</b>	76	<b>2.00</b>	51
HSL-NE-300	<b>3.00</b>	76	<b>2.50</b>	63	<b>3.50</b>	89	<b>2.25</b>	57	<b>4.38</b>	112	<b>2.50</b>	63
HSL-NE-400	<b>4.00</b>	102	<b>3.00</b>	76	<b>5.00</b>	127	<b>2.00</b>	51	<b>6.00</b>	152	<b>4.00</b>	102
HSL-NE-600	<b>6.00</b>	152	<b>4.50</b>	115	<b>7.50</b>	191	<b>3.00</b>	76	<b>9.00</b>	229	<b>6.00</b>	152

Dimension shown in **inches** (bold) and millimeters. Refer to the HSL-NE AutoCAD file for individual system drawings.

## LOAD TABLE



Safe Walking Surface



Utility Cart

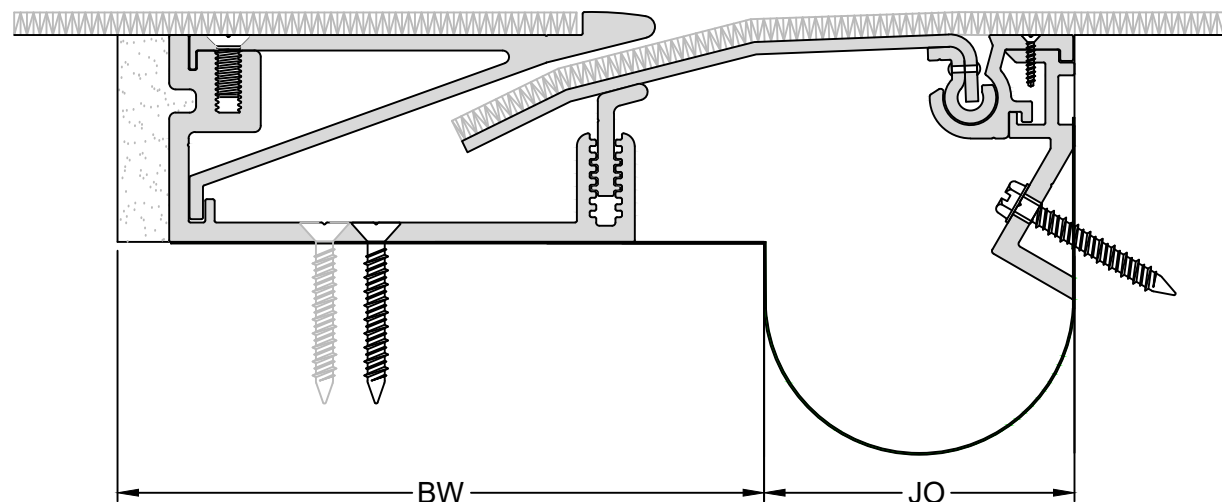


Carpet Cleaner



Passenger Cart

Note: The HSL-NE loading capabilities shown above are based upon average equipment weights, wheel types and sizes. For project-specific loading capabilities, contact MM Systems with technical data related to wheel type, contact area (footprint), distributed load per wheel, and speed of traffic.



50 MM WAY  
PENDERGRASS, GA. 30567  
706-824-7500 PHONE

[www.mm.systems](http://www.mm.systems)

For Spec-Data, Install Guides, and other data visit [www.mm.systems](http://www.mm.systems)

## RIGHTS OF DESIGN

All rights of design, detail, engineering and/or invention contained herein are the property of MM Systems and hereby reserved and are not to be reproduced or provided to any other party. MM Systems reserves the right to amend or withdraw any information contained herein without notice and will not be liable for any inaccuracy or ambiguity of said information.

## Hidden Sightline System Expansion Joint

### HSL-NE Series (100-600)

Drawn by:

JRC

Scale:

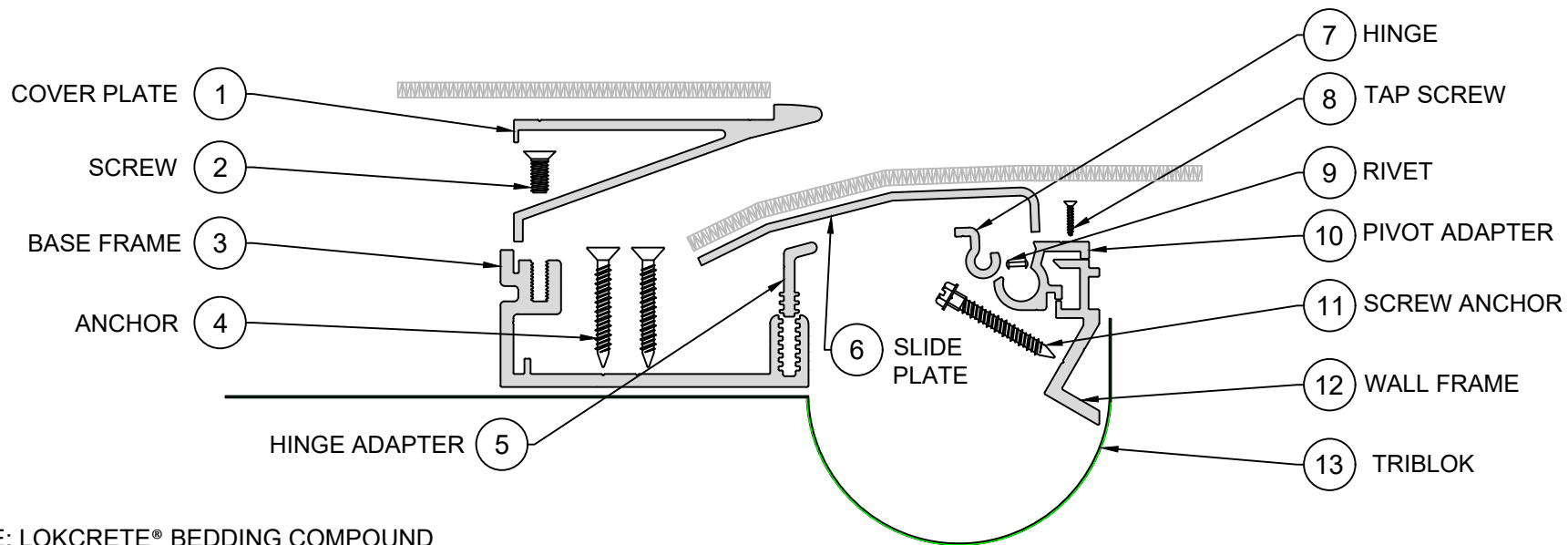
NTS

Drawing Number:

SHT. 3 OF 4

Issue Date:  
01/04/24

10000-02



NOTE: LOKCRETE® BEDDING COMPOUND  
(8333) Not shown.

EXPLODED VIEW ▲

PART NUMBERS ▼

Locator	Part Component	HSL-NE-100	HSL-NE-200	HSL-NE-300	HSL-NE-400	HSL-NE-600
1	Cover Plate	8950-M-10	8950-M-10	8950-M-10	8950-M-10	8950-M-10
2	Screw	9369	9369	9369	9369	9369
3	Base Frame	8951-M-10	8951-M-10	8951-M-10	8951-M-10	8951-M-10
4	Anchor	9377	9377	9377	9377	9377
5	Hinge Adapter	5959-M-10	5959-M-10	5959-M-10	5959-M-10	5959-M-10
6	Slide Plate	SG-304-2B-11G-48-120	SG-304-2B-11G-48-120	SG-304-2B-11G-48-120	SG-304-2B-11G-48-120	SG-304-2B-11G-48-120
7	Hinge	8977-M-10	8977-M-10	8977-M-10	8977-M-10	8977-M-10
8	Tap Screw	9535	9535	9535	9535	9535
9	Rivet	9536	9536	9536	9536	9536
10	Pivot Adapter	8955-M-10	8955-M-10	8955-M-10	8955-M-10	8955-M-10
11	Screw Anchor	9397	9397	9397	9397	9397
12	Frame	8956-M-10	8956-M-10	8956-M-10	8956-M-10	8956-M-10
13	TriBlok Moisture Barrier (Optional)	MBTB-10.5	MBTB-21	MBTB-21	MBTB-21	MBTB-21



50 MM WAY  
PENDERGRASS, GA. 30567  
706-824-7500 PHONE

[www.mm.systems](http://www.mm.systems)

For Spec-Data, Install Guides, and other data visit [www.mm.systems](http://www.mm.systems)

#### RIGHTS OF DESIGN

All rights of design, detail, engineering and/or invention contained herein are the property of MM Systems and hereby reserved and are not to be reproduced or provided to any other party. MM Systems reserves the right to amend or withdraw any information contained herein without notice and will not be liable for any inaccuracy or ambiguity of said information.

#### Hidden Sightline System Expansion Joint

#### HSL-NE Series (100-600)

Drawn by:

JRC

Scale:

NTS

Drawing Number:

SHT. 4 OF 4

Issue Date:  
01/04/24

10000-02