

EMS Series Expansion Joint

Sizes 250 through 550

(Slab-to-Slab)



50 MM WAY
PENDERGRASS, GA. 30567
706-824-7500 PHONE

www.mm.systems

For Spec-Data, Install Guides, and other data visit www.mm.systems

RIGHTS OF DESIGN

All rights of design, detail, engineering and/or invention contained herein are the property of MM Systems and hereby reserved and are not to be reproduced or provided to any other party. MM Systems reserves the right to amend or withdraw any information contained herein without notice and will not be liable for any inaccuracy or ambiguity of said information.

ElastoLok Membrane System

EMS Series (250-550) / 50% Movement





Drawn by: EAW	Scale: NTS	Drawing Number:
SHT. 1 OF 3	Issue Date: 05/26/2023	30500-01

EMS SERIES EXPANSION JOINT MOVEMENT CHART

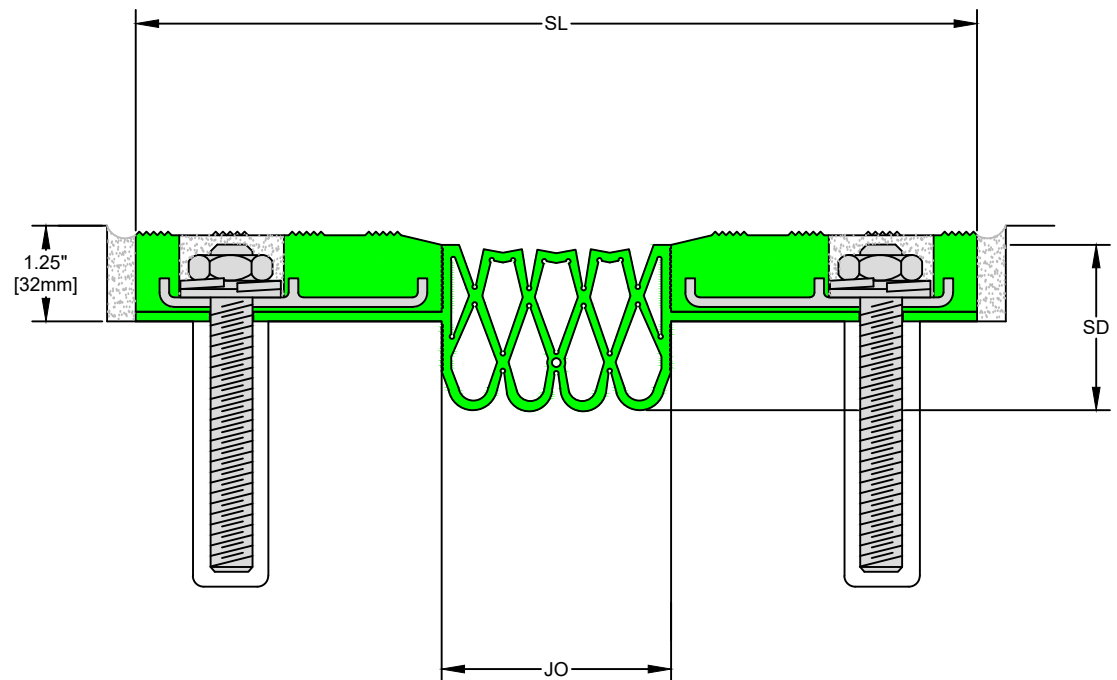
Model Number	Joint Opening (JO ^N)		Sight Line (SL ^N)		Thermal Movement (JO ^T)				Seismic Movement (JO ^S)				Total (JO ^A)		Seal Depth (SD)	
	Nominal		Nominal		Minimum		Maximum		Minimum		Maximum		Movement			
EMS-250	1.50	38	9.50	241	0.75	19	2.50	64	0.75	19	3.25	83	2.50	64	2.02	51
EMS-350	2.00	51	10.00	254	1.00	25	3.50	89	1.00	25	4.25	108	3.25	83	2.07	53
EMS-450	3.00	76	11.00	279	1.50	38	4.50	114	1.50	38	5.50	140	4.00	102	2.16	55
EMS-550	4.00	102	12.00	305	1.50	38	5.50	140	1.50	38	6.50	165	5.00	127	1.87	47

Dimensions shown in inches (bold) and millimeters. Refer to the EMS AutoCAD file for individual system sizes and drawings. **Color Options for rubber seals are Black or Special Order Gray.**

LOAD TABLE

	Auto (Low Speed)
	Emergency Vehicle (Low Speed)
	Scissor Lift
	Forklift

Note: The EMS loading capabilities shown above are based upon average vehicular and equipment weights, wheel types and sizes. For project-specific loading capabilities, contact MM Systems with technical data related to wheel type, contact area (footprint), distributed load per wheel, and speed of traffic.



50 MM WAY
PENDERGRASS, GA. 30567
706-824-7500 PHONE

www.mm.systems

For Spec-Data, Install Guides, and other data visit www.mm.systems

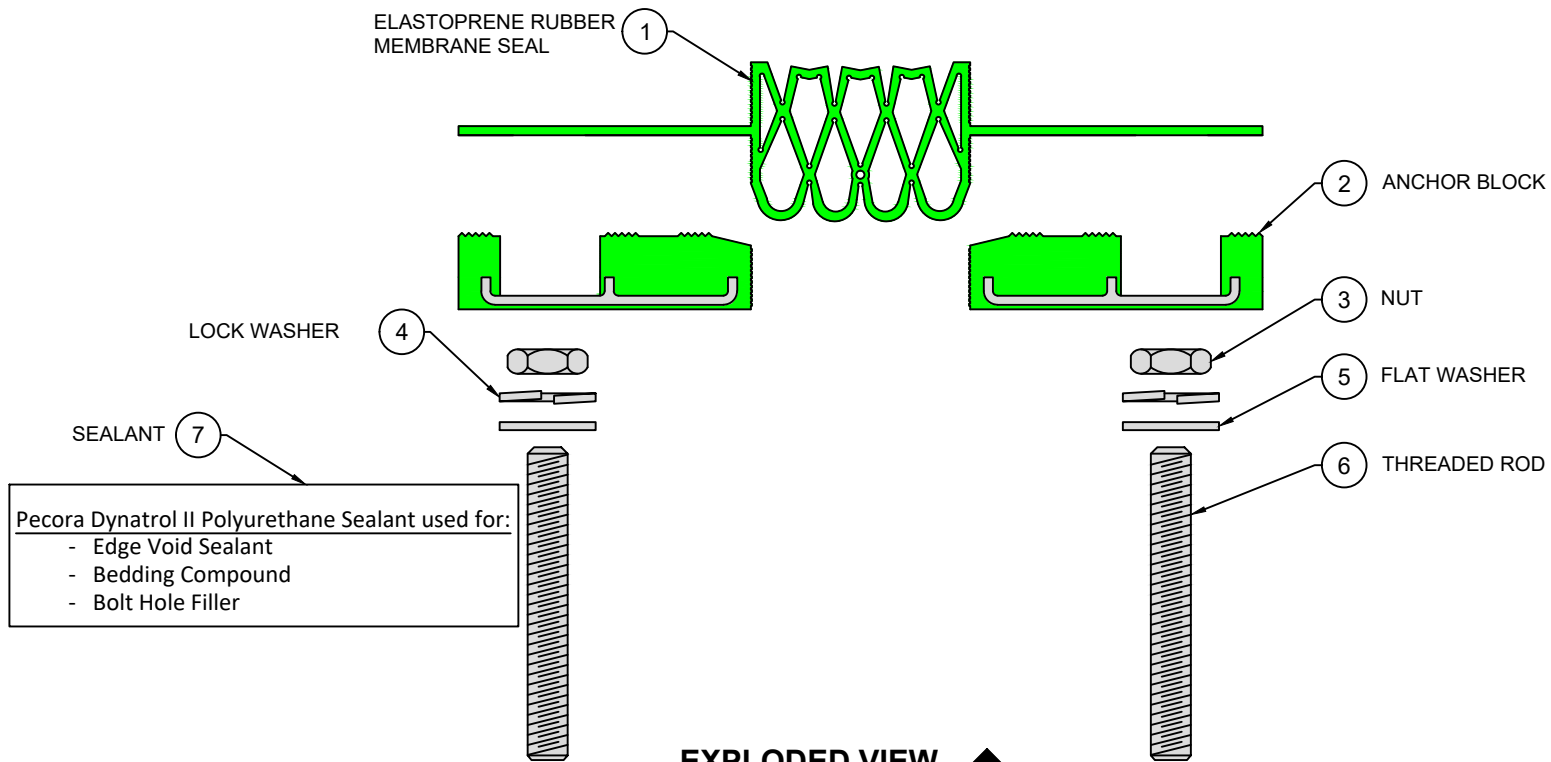
RIGHTS OF DESIGN

All rights of design, detail, engineering and/or invention contained herein are the property of MM Systems and hereby reserved and are not to be reproduced or provided to any other party. MM Systems reserves the right to amend or withdraw any information contained herein without notice and will not be liable for any inaccuracy or ambiguity of said information.

ElastoLok Membrane System

EMS Series (250-550) / 50% Movement

Drawn by: ENL	Scale: NTS	Drawing Number:
SHT. 2 OF 3	Issue Date: 03/08/2023	30500-01



EXPLODED VIEW ▲
PART NUMBERS ▼

Locator	Part Component	EMS-250	EMS-350	EMS-450	EMS-550
1	Seal	8377-65	8378-65	8379-65	8380-65
2	Anchor Block	8376-R-10	8376-R-10	8376-R-10	8376-R-10
3	Nut	8315	8315	8315	8315
4	Lock Washer	8313	8313	8313	8313
5	Flat Washer	8312	8312	8312	8312
6	Threaded Rod	8315	8315	8315	8315
7	Sealant	8394	8394	8394	8394



50 MM WAY
PENDERGRASS, GA. 30567
706-824-7500 PHONE

www.mm.systems

For Spec-Data, Install Guides, and other data visit www.mm.systems

RIGHTS OF DESIGN

All rights of design, detail, engineering and/or invention contained herein are the property of MM Systems and hereby reserved and are not to be reproduced or provided to any other party. MM Systems reserves the right to amend or withdraw any information contained herein without notice and will not be liable for any inaccuracy or ambiguity of said information.

ElastoLok Membrane System

EMS Series (250-550) / 50% Movement

Drawn by:
EAW

Scale:
NTS

Drawing Number:

SHT. 3 OF 3

Issue Date:
05/26/2023

30500-01