

EMC Series Expansion Joint

Sizes 250 through 550
(Slab-to-Slab)

* IMPORTANT DIMENSION - ACHIEVE REQUIRED DEPTH BY EXACT FORMING, GRINDING, MILLING OR STRUCTURAL LEVELING BED



50 MM WAY
PENDERGRASS, GA. 30567
706-824-7500 PHONE

www.mm.systems

For Spec-Data, Install Guides, and other data visit www.mm.systems

RIGHTS OF DESIGN

All rights of design, detail, engineering and/or invention contained herein are the property of MM Systems and hereby reserved and are not to be reproduced or provided to any other party. MM Systems reserves the right to amend or withdraw any information contained herein without notice and will not be liable for any inaccuracy or ambiguity of said information.

Elastolok Membrane Cast-in System

EMC Series (250-550)

Drawn by:
EAW

Scale:
NTS

Drawing Number:



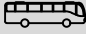


SHT. 1 OF 3

Issue Date:
05/26/2023

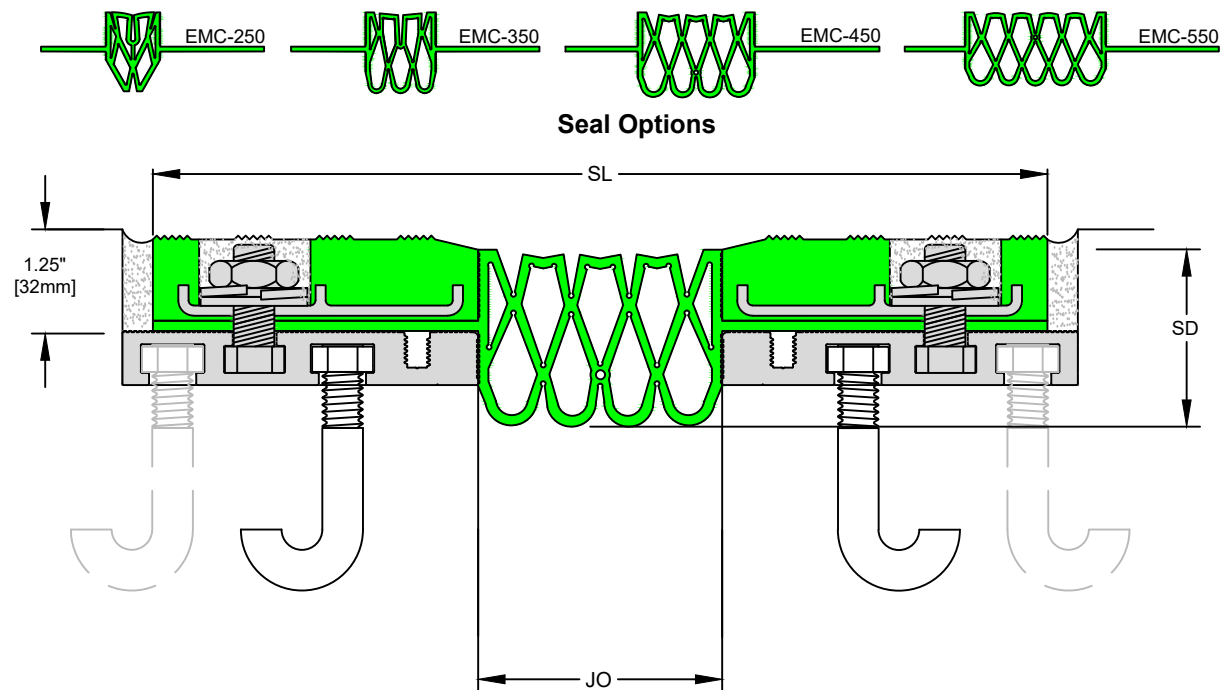
30500-01

Model Number	Nominal (JO _N)		Nominal (SL _N)		Thermal Movement (JO _T)				Seismic Movement (JO _S)				Total (JO _Δ)	
					Minimum		Maximum		Minimum		Maximum		Movement	
EMC-250	1.50	38	9.50	241	0.75	19	2.50	64	0.75	19	3.25	83	2.50	64
EMC-350	2.00	57	10.00	254	1.00	25	3.50	89	1.00	25	4.25	108	3.25	83
EMC-450	3.00	76	11.00	279	1.50	38	4.50	114	1.50	38	5.50	140	4.00	102
EMC-550	4.00	102	12.00	305	1.50	38	5.50	140	1.50	38	6.50	165	5.00	127

Dimension shown in inches (bold) and millimeters. JO = Joint Opening. SL = Sight Line. Color Options for rubber seals are Black or Special Order Gray.

LOAD TABLE	
	Auto (Low Speed)
	Emergency Vehicle (Low Speed)
	Bus (Low Speed)
	Scissor Lift
	Forklift

Note: The EMC loading capabilities shown above are based upon average vehicular and equipment weights, wheel types and sizes. For project-specific loading capabilities, contact MM Systems with technical data related to wheel type, contact area (footprint), distributed load per wheel, and speed of traffic.



50 MM WAY
PENDERGRASS, GA. 30567
706-824-7500 PHONE

www.mm.systems

For Spec-Data, Install Guides, and other data visit www.mm.systems

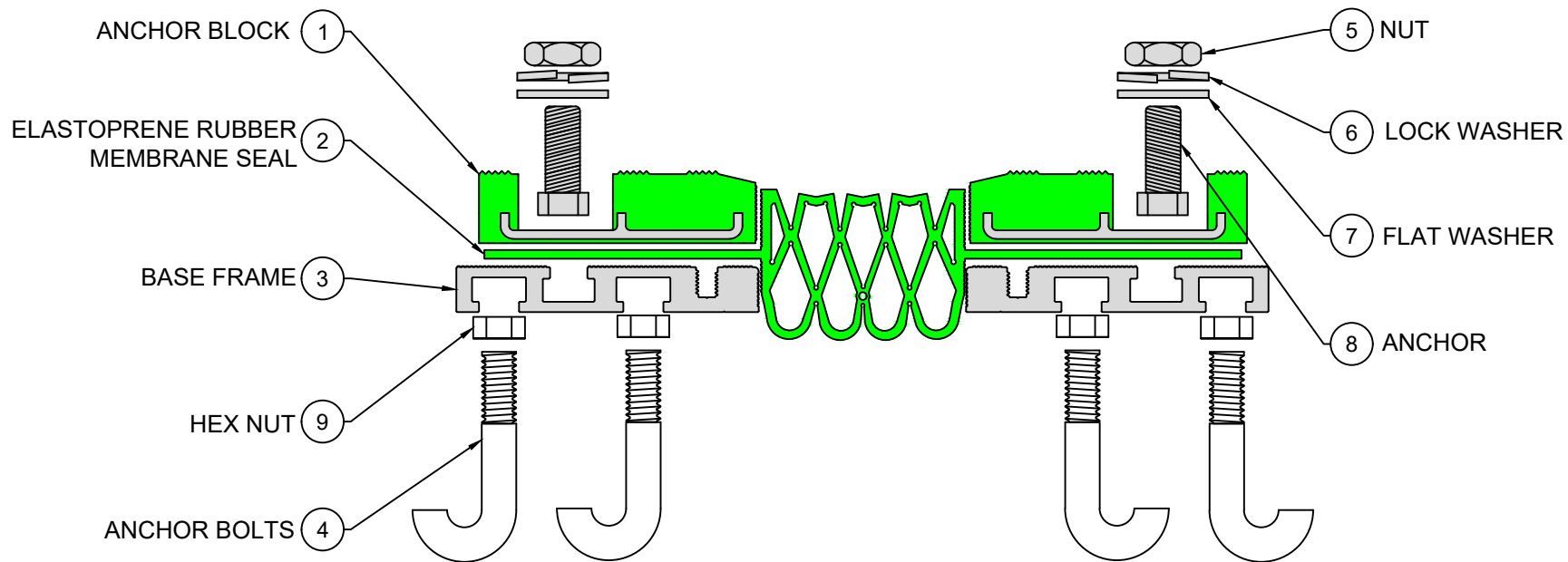
RIGHTS OF DESIGN

All rights of design, detail, engineering and/or invention contained herein are the property of MM Systems and hereby reserved and are not to be reproduced or provided to any other party. MM Systems reserves the right to amend or withdraw any information contained herein without notice and will not be liable for any inaccuracy or ambiguity of said information.

Elastolok Membrane Cast-in System

EMC Series (250-550)

Drawn by: ENL	Scale: NTS	Drawing Number: 30500-01
SHT. 2 OF 3	Issue Date: 03/08/2023	



EXPLODED VIEW ▲

PART NUMBERS ▼

Locator	Part Component	EMC-250	EMC-350	EMC-450	EMC-550
1	Anchor Block	8376-R-10	8376-R-10	8376-R-10	8376-R-10
2	Seal	8377-65	8378-65	8379-65	8380-65
3	Anchor Bolts	8324	8324	8324	8324
4	Base Frame	8297-M-10	8297-M-10	8297-M-10	8297-M-10
5	Nut	8314	8314	8314	8314
6	Lock Washer	8313	8313	8313	8313
7	Flat Washer	8312	8312	8312	8312
8	Anchor	8296	8296	8296	8296
9	Hex Nut	9929	9929	9929	9929



50 MM WAY
PENDERGRASS, GA. 30567
706-824-7500 PHONE

www.mm.systems

For Spec-Data, Install Guides, and other data visit www.mm.systems

RIGHTS OF DESIGN

All rights of design, detail, engineering and/or invention contained herein are the property of MM Systems and hereby reserved and are not to be reproduced or provided to any other party. MM Systems reserves the right to amend or withdraw any information contained herein without notice and will not be liable for any inaccuracy or ambiguity of said information.

Elastolok Membrane Cast-in System

EMC Series (250-550)

Drawn by:

EAW

Scale:

NTS

Drawing Number:

SHT. 3 OF 3

Issue Date:
05/26/2023

30500-01