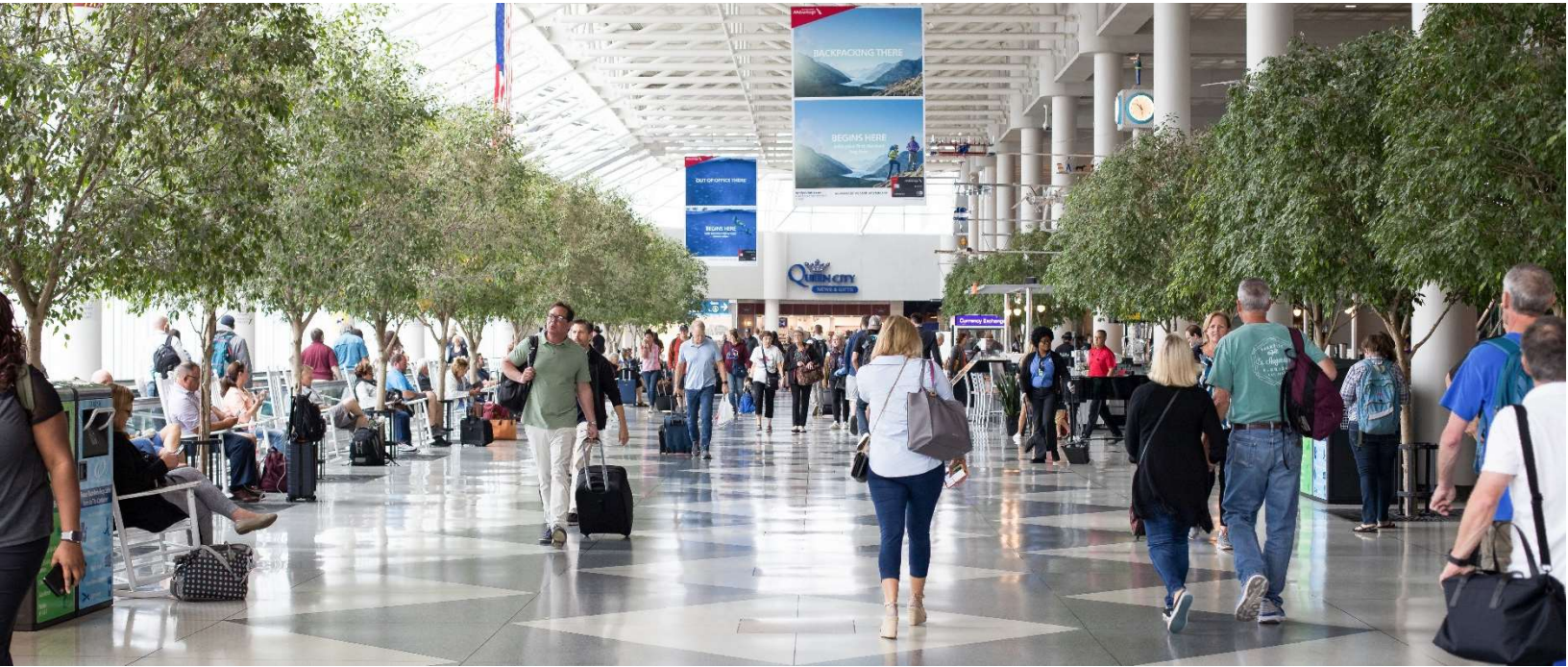


CHARLOTTE DOUGLAS INTERNATIONAL AIRPORT TERMINAL LOBBY EXPANSION



PROJECT PROFILE > AIRPORT

PROJECT HIGHLIGHTS

Ranked as one of the world's busiest airports, Charlotte Douglas International Airport (CLT) is quickly growing in passenger traffic. With a commitment to a higher level of service, CLT invested in a \$600 million transformation to the terminal lobby—a large curtain wall, entrance portals, a curbside canopy as well as additional space for security lanes, ticketing, and baggage claim.

MM Systems provided an ideal solution for the expansion joints in these high-trafficked lobby areas with our Dual and Single Interlocking Hinge Seismic Systems (DIH and SIH). Our products provide a smooth, impact-free, and low-maintenance transition for the floor joints. The system remains flush during thermal and seismic movement while roller bags, luggage carts, and pedestrian traffic move easily across the flush, slip-resistant surface.

Although function is a prime component for our products, the aesthetics offer a value-add to any project. Because our floor and wall joints meet seamlessly together, there is no disruption from one condition to the next. For CLT, our SIH Floor System transitions at the wall to our Metal Wall and Ceiling (FX-K) system. The FX-K System features a beautiful, clear anodized finish. This classic look blends into the overall wall design and serves both form and function.

PROJECT

Charlotte Douglas International Airport Terminal Lobby Expansion

LOCATION

Charlotte, NC

BUILDING TYPE

- Airport Terminal Lobby
- 370,000 sq. ft. expansion & renovation

EXPANSION JOINT SYSTEMS

- Dual Interlocking Hinge (DIH)
- Single Interlocking Hinge (SIH)
- FX Series Floating Aluminum Cover (FX-K)
- Epoxy Bonded Sealing System (EBS)
- Rubber Safety Cover (RSC)
- ColorJoint Silicone Infused Foam Seals (SIF)
- Silicone Covered EVA Horizontal Foam (SCE-H)

ARCHITECT

Gresham Smith & K2M Design

GENERAL CONTRACTOR

Holder-Edison Foard-Leeper, a Joint Venture

INSTALLATION CONTRACTOR

Strickland Waterproofing

CHARLOTTE DOUGLAS INTERNATIONAL AIRPORT TERMINAL LOBBY EXPANSION



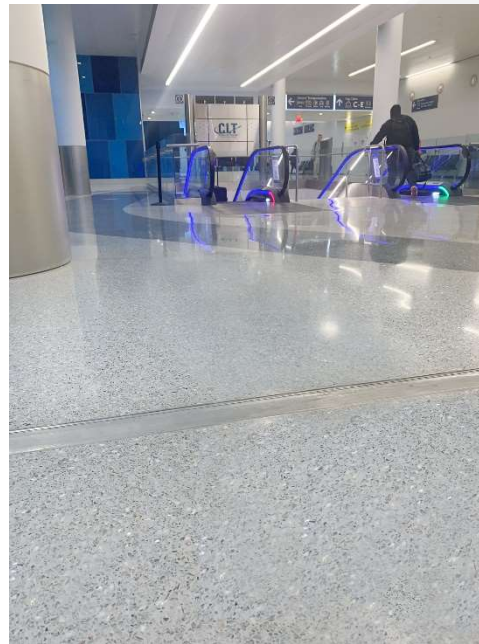
Single Interlocking Hinge Seismic System (SIH) inlaid with terrazzo floor (provided by others).



SIH Floor System transitions to FX-K Metal Wall and Ceiling System.



Dual Interlocking Hinge Seismic System (DIH) spans across the lobby inlaid with terrazzo floor (provided by others).



MM Systems
50 MM Way • Pendergrass, GA 30567
706.824.7500 • www.mm.systems

M65562. V1

 **MM SYSTEMS™**
Tailored Technology Solutions™