

ADLAI E. STEVENSON HIGH SCHOOL



PROJECT PROFILE > EDUCATION

PROJECT HIGHLIGHTS

As a second addition to Adlai E. Stevenson High School's East Building, this 106,300 square foot school expansion project meets the needs for physical and emotional learning. This addition houses health and fitness activities for more than 4,200 students and student athletes.

Addressing growing enrollment numbers means providing more space for students both in and out of the classroom. The Patriot Wellness Center hosts a 20,000 square foot field house for student athletes with open and unobstructive views out a wall of windows—bringing nature inside. Wrapped columns help make the unobstructed view a possibility.

CUSTOM COLUMN COVERS

Our custom Column Covers are individually engineered and crafted to meet each project's unique requirements.

Column Covers are available in a variety of materials and unlimited configurations and colors. Designed to enhance—built to last.

PROJECT

Adlai E. Stevenson High School

LOCATION

Lincolnshire, IL

BUILDING TYPE

Two-story school building with classrooms and fitness center.

PRODUCTS

Column Covers in a two-coat 40 A-L Clear Kynar 500®/ Hylar 5000® finish

ARCHITECT

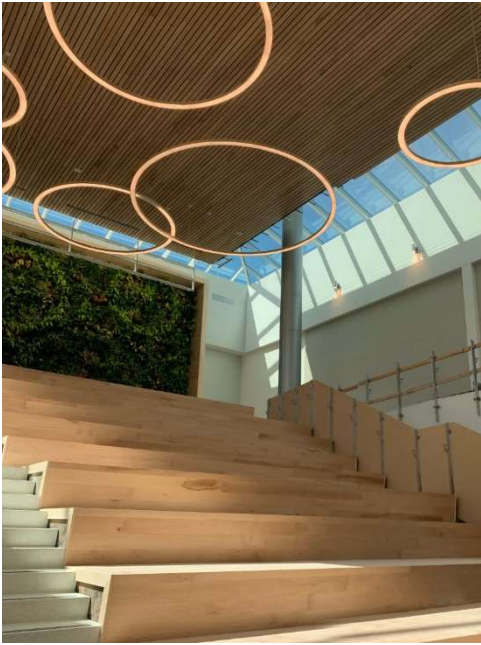
Wight Company

GENERAL CONTRACTOR

Gilbane Building Company

INSTALLATION CONTRACTOR

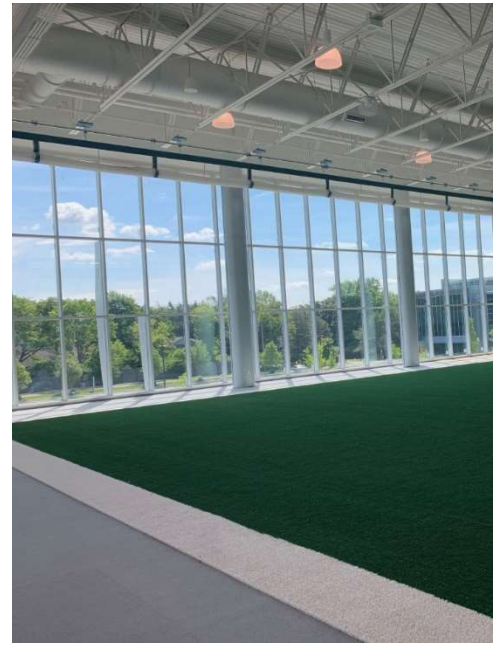
American Igloo Builders



Student-gathering steps—an open space concept supported by wrapped columns.



Gathering spaces for student wellness.



Patriot Wellness Center with open concept to nature.



Exterior patio outside the Patriot Wellness Center.